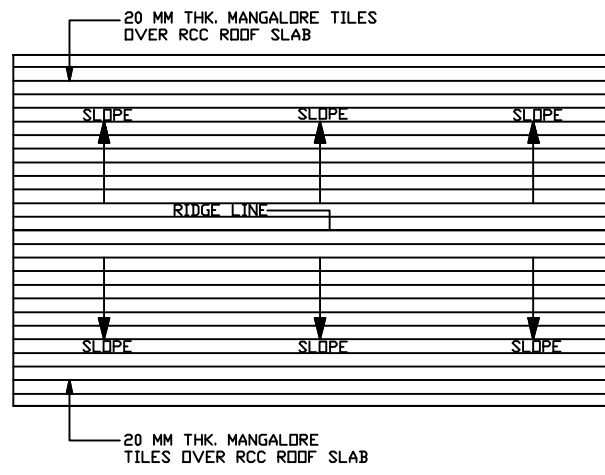
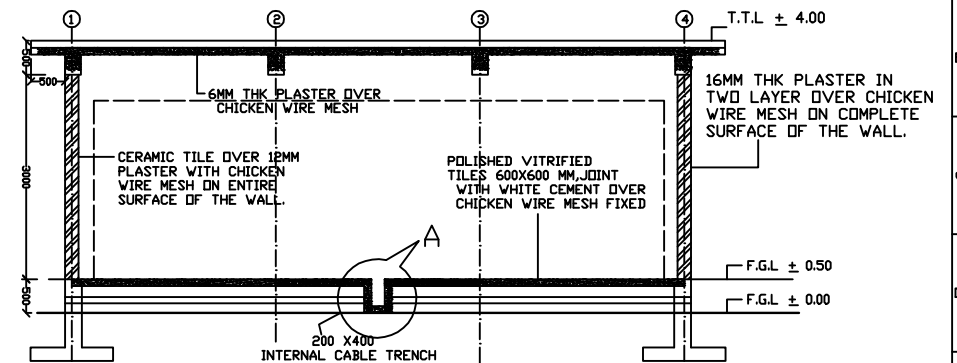


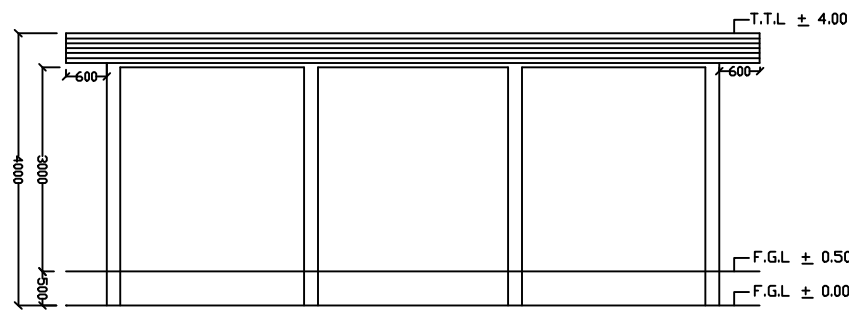
**GROUND FLOOR PLAN**



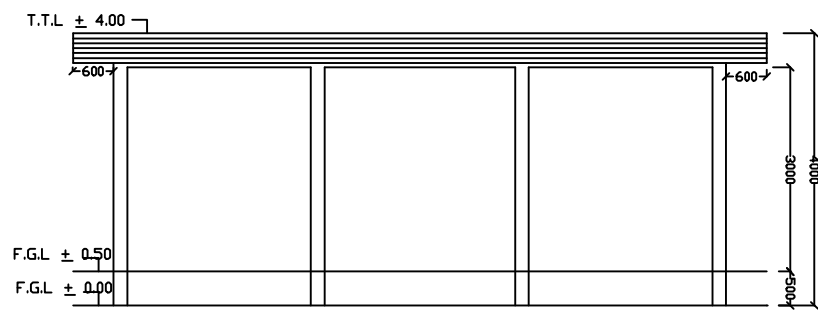
**TERRACE PLAN**



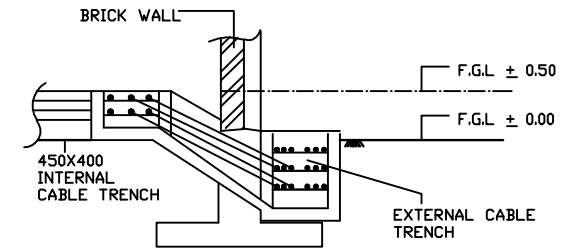
**SECTION AT B-B**



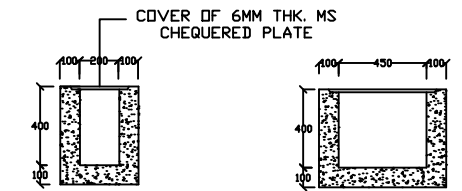
**ELEVATION AT D-D**



**ELEVATION AT C-C**

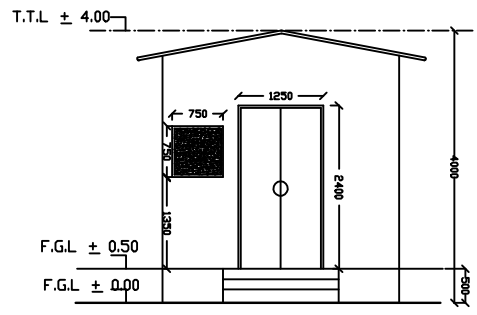


**SECTION AT C-C**

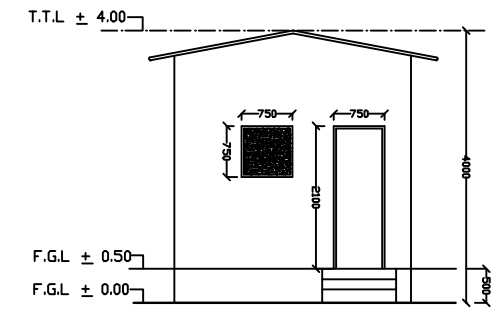


**DETAILS-A**

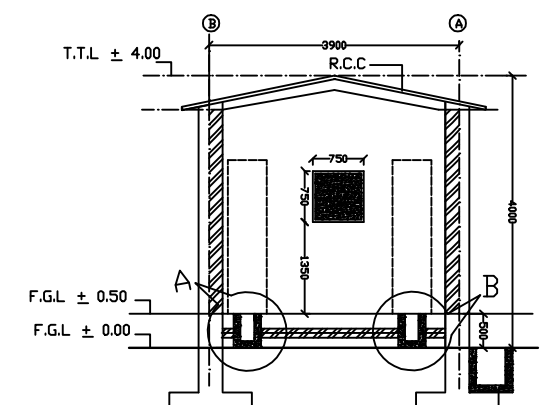
**DETAILS-B**



**ELEVATION AT A-A**



**ELEVATION AT B-B**



**SECTION A-A**

Door/Window Schedule				
<b>Doors</b>				
Typ.	Size	Description		
D1	1200 x 2400	FIRE PROOF STEEL DOOR		
D2	750 x 2100	FIRE PROOF STEEL DOOR		
<b>Windows</b>				
Typ.	Size	Lintel	Sill	Description
A	750 x 750	2100	1350	OPENING FOR FIXING AC
NOTE:-				
1. ALL DIMENSIONS ARE IN MM AND LEVELS ARE IN MTR.				
2. OPENINGS ARE PROVIDED FOR INSTALLATION OF AC. IN CASE ONE AC IS PROVIDED, OTHER OPENING SHALL BE CLOSED.				
3. 22G x 12MM CHICKEN WIRE MESH TO BE PROVIDED FOR ALL WALL, FLOORING AND ROOF. CHICKEN WIRE MESH SHALL BE CONNECTED WITH EARTHING SYSTEM THROUGH 75 x 12MM FLAT FIXED ON DIAGONALLY OPPOSITE COLUMNS ON ITS OUTER SURFACE.				