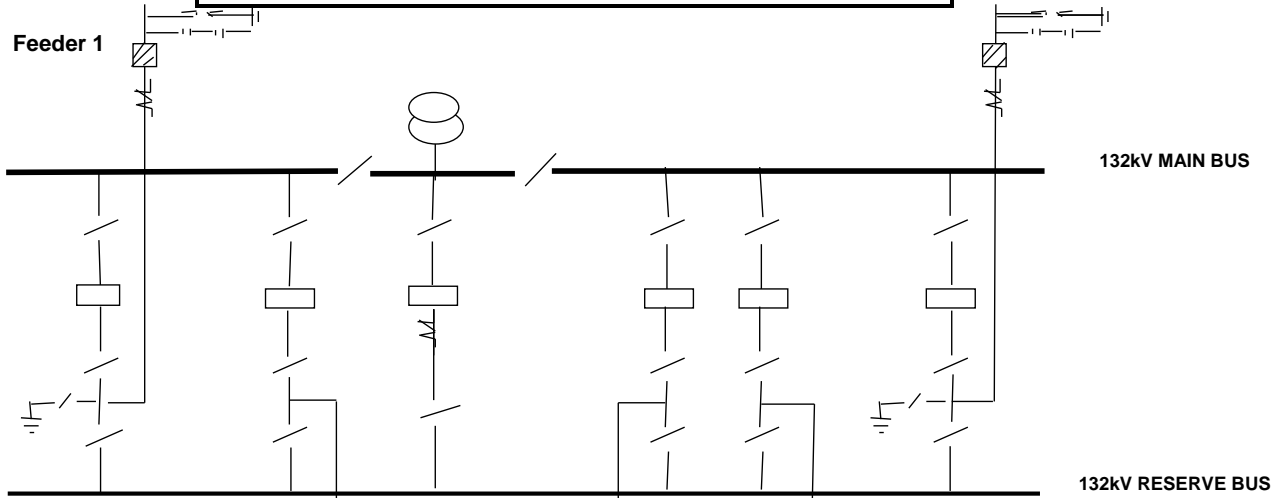


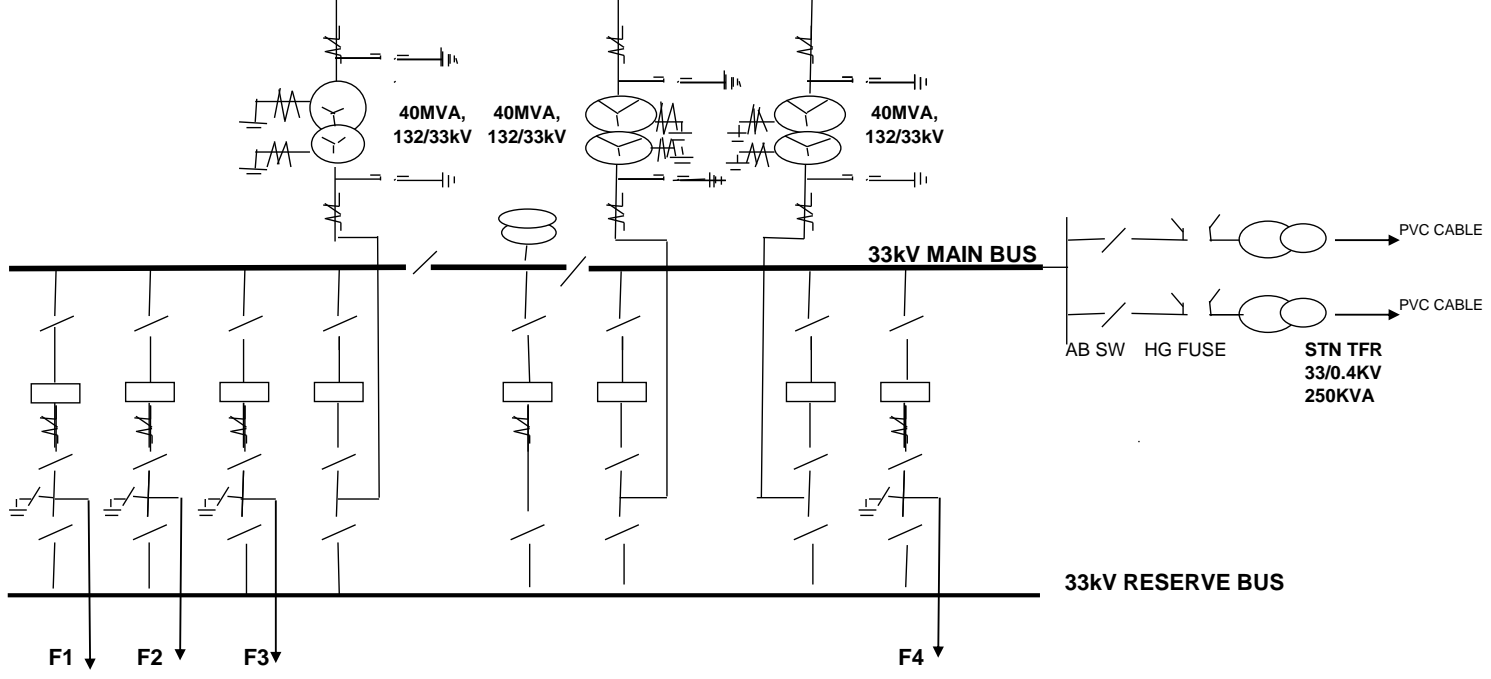


INDICATIVE SLD FOR 132/33kV SUB-STATION

132 KV BAYS
 FEEDER 02 NOS.
 TRANSF 03 NOS.
 BUS COU 01 NO.

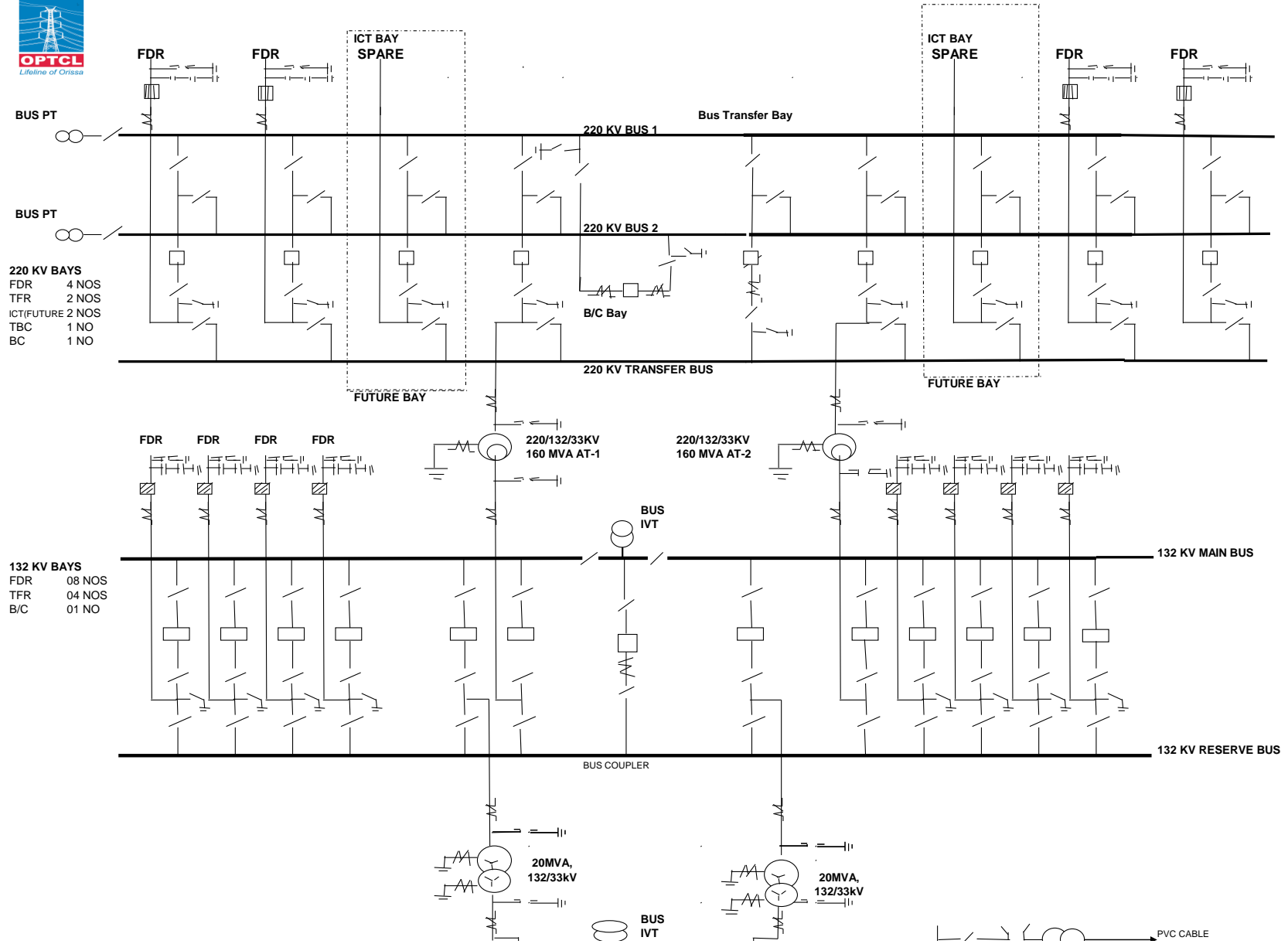


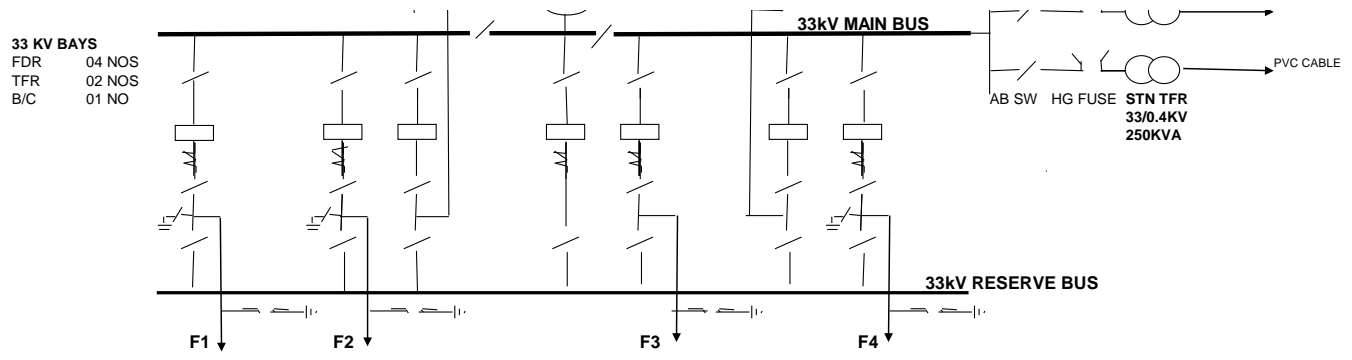
33KV BAY
 FEEDER 04 NOS.
 TRANSF 03 NOS.
 BUS COU 01 NO.



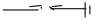



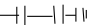
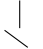
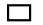
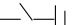
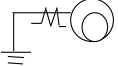
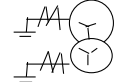
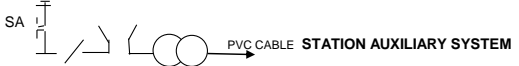


INDICATIVE SLD FOR 220/132/33kV SUB-STATION -3BUS ARRANGEMENT-in 220 KV SIDE





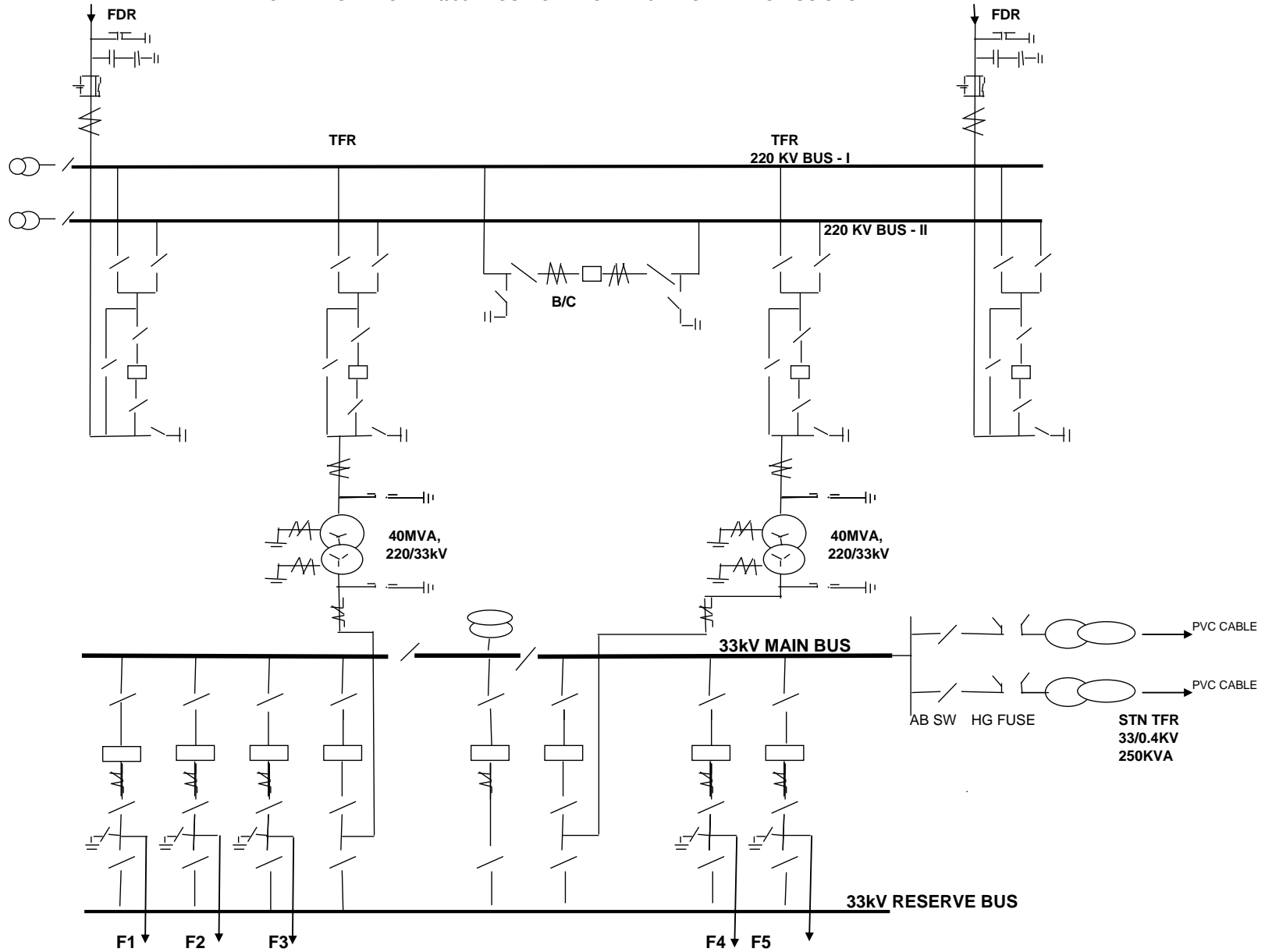
SYMBOLS USED

-  SURGE ARRESTOR
-  WAVE TRAP
-  CURRENT TRANSFORMER
-  IND VOLTAGE TRANSFORMER
-  CAP VOLTAGE TRANSFORMER
-  ISOLATOR
-  CKT BKR
-  EARTH SWITCH
-  AUTO TRANSFORMER
-  POWER TRANSFORMER
-  STATION AUXILIARY SYSTEM



220 KV BAYS
 FDR 02 NOS
 TFR 2 NOS
 BC 1 NO

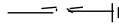
INDICATIVE SLD FOR 220/33kV SUB-STATION -220 KV SIDE TWO BUS SYSTEM



33 KV BAYS
 FDR 05 NOS
 TFR 02 NOS
 B/C 01 NO

**STN TFR
 33/0.4KV
 250KVA**

SYMBOLS USED



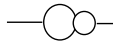
SURGE ARRESTOR



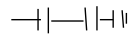
WAVE TRAP



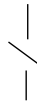
CURRENT TRANSFORMER



IND VOLTAGE TRANSFORMER



CAP VOLTAGE TRANSFORMER



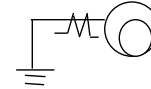
ISOLATOR



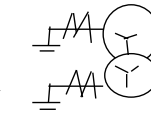
EARTH SWITCH



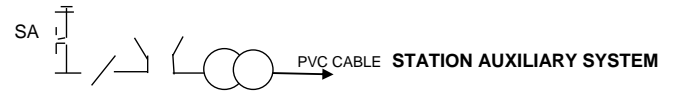
CKT BKR



AUTO TRANSFORMER



POWER TRANSFORMER



SA AB SWI HG FUSE STN TFR CABLE

STATION AUXILIARY SYSTEM