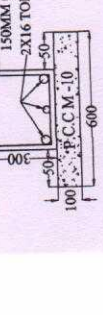
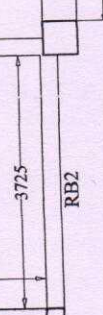
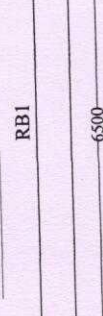
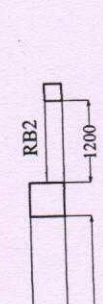
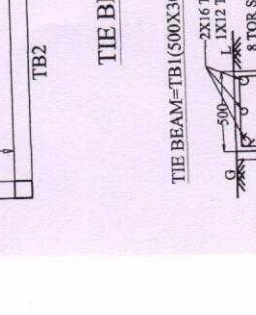
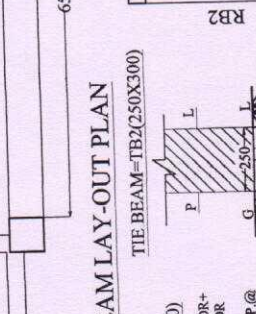
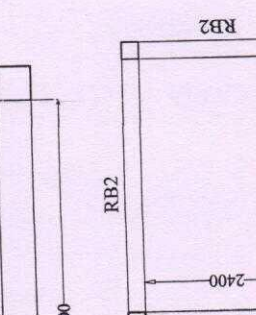
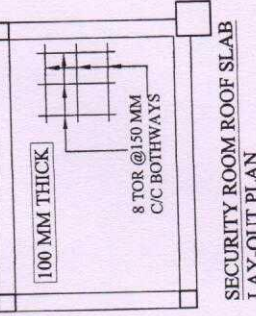
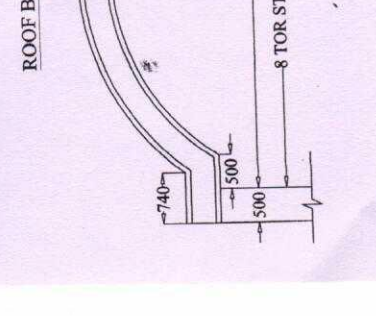
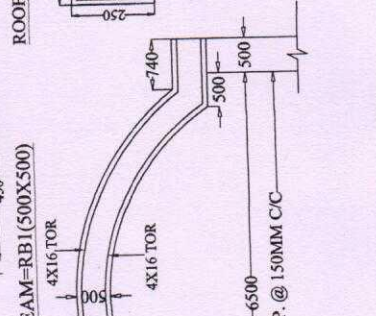
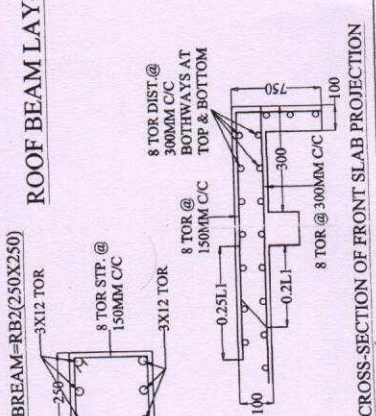


NOTES:-
 1. COVERS TO REINFORCEMENT:-
 i) FOOTING = 50 MM
 ii) COLUMN = 40 MM
 iii) BEAM = 25 MM
 iv) SLAB = 20 MM
 2. CONCRETE
 i) P.C.C = M-10
 ii) R.C.C = M-20
 3. STEEL
 Fy-500 (TOR STEEL)



CUSTOMER:-	ORISSA POWER TRANSMISSION CORPORATION LTD., BHUBANESWAR.
PROJECT:-	CONSTRUCTION OF R.C.C WELCOME GATE, SECURITY GUARD ROOM & WICKET GATE AT THE ENTRANCE OF 132/33 KV GRID S/S, PURI.
SUBMITTED TO:-	D.G.M (Elect.) E.H.T (O&M) DIVISION, PURI.
CONSULTANT:-	R & P ASSOCIATES R & P ASSOCIATES 491/2, SAHIDNAGAR BHUBANESWAR.



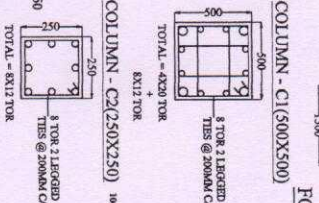
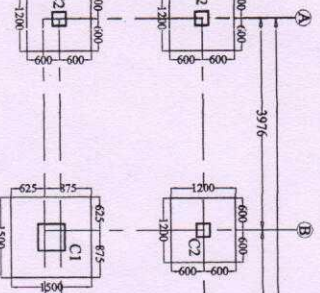
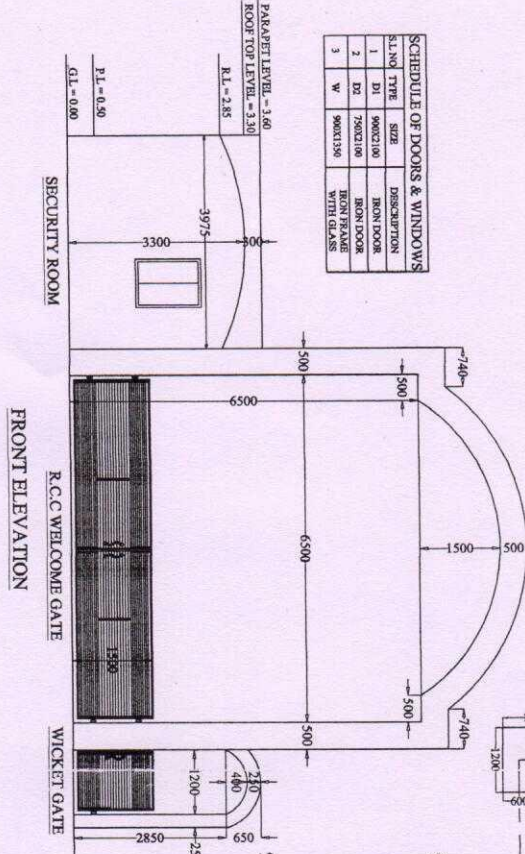
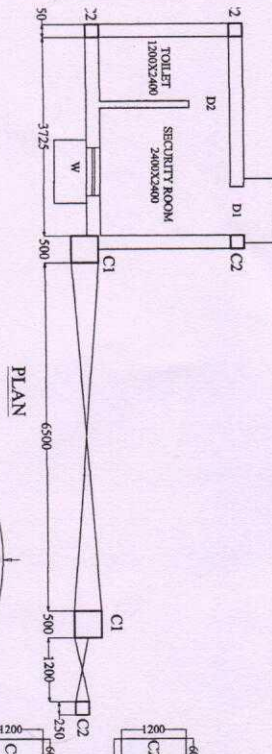
Dr. M. K. Mishra
 E.H.T (O & M) Subdivision
 OPTCL, Puri

Dr. G. K. Mishra
 Asst. General Manager (Elect)
 E.H.T. (O & M) Subdivision
 OPTCL Puri

Dr. M. K. Mishra
 Asst. General Manager (Elect)
 E.H.T. (O & M) Subdivision
 OPTCL Puri

Dr. M. K. Mishra
 Asst. General Manager (Elect)
 E.H.T. (O & M) Subdivision
 OPTCL Puri

S.L.NO	TYPE	SIZE	DESCRIPTION
1	D1	900X2100	IRON DOOR
2	D2	750X2100	IRON DOOR
3	W	900X1350	IRON FRAME WITH GLASS



CUSTOMER:-	ORISSA POWER TRANSMISSION CORPORATION LTD., BHUBANESWAR.
PROJECT:-	CONSTRUCTION OF R.C.C WELCOME GATE, SECURITY GUARD ROOM & WICKET GATE AT THE ENTRANCE OF 132/3 KV GRID S/S, PUBL.
SUBMITTED TO:-	R.G.M (Elect) EHT (O&M) DIVISION, PUBL.
CONSULTANT:-	R & P ASSOCIATES R&P ASSOCIATES 49/12, SAHIDNAGAR BHUBANESWAR.

By *[Signature]* / 18
 ESTIMATOR
 EHT (O&M) DIVISION
 PUBL.

By *[Signature]* / 18
 Asst. General Manager / EHT (O&M) Division
 PUBL.

By *[Signature]* / 18
 Manager (Admin)
 EHT (O&M) Sub-division
 PUBL.

R & P ASSOCIATES