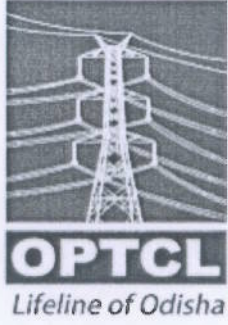


**(SECTION-1)**  
**TENDER CALL NOTICE**



**ଓଡ଼ିଶା ବିଦ୍ୟୁତ ଶକ୍ତି ସଂଚାରଣ ନିଗମ ଲିଡ.**  
**ODISHA POWER TRANSMISSION CORPORATION LTD.**

*(A Government of Odisha under taking)*

Regd. Office: Janpath, Bhubaneswar-751022, Odisha

**OFFICE OF THE GENERAL MANAGER (ELECT.)**

EHT (O&M) CIRCLE: BURLA,

AT/PO – BURLA, DIST.: SAMBALPUR – 768017

TELE/FAX: (0663) 2430160, e-mail: [ehm.cle.brl@optcl.co.in](mailto:ehm.cle.brl@optcl.co.in)

CIN: U40102OR2004SGC007553

**e-TENDER NOTICE NO. BRL- 21/ 2019-20**

For and on behalf of ODISHA POWER TRANSMISSION CORPORATION LTD General Manager, EHT (O&M) Circle, OPTCL, Burla, invites Tenders from reputed Bidders in single part bidding system for Supply of total 10 Nos. of 132KV BMK (04 Nos.) and 33KV BMK (06 Nos.) for 132/33KV Grid Sub-Station, Brajrajnagar. The interested bidders would be required to enroll themselves on the tender portal [www.tenderwizard.com/OPTCL](http://www.tenderwizard.com/OPTCL). Complete set of bidding documents are available at [www.tenderwizard.com/OPTCL](http://www.tenderwizard.com/OPTCL) from 18.12.2019 (10.00 Hrs) up to 02.01.2020 (13.30 Hrs). Interested Bidder may visit OPTCL's official web site <http://www.optcl.co.in> and [www.tenderwizard.com/OPTCL](http://www.tenderwizard.com/OPTCL) for detail specification.

N.B:- All subsequent addendums/corrigendum to the tender shall be hosted in the OPTCL's official website <http://www.optcl.co.in> and [www.tenderwizard.com/OPTCL](http://www.tenderwizard.com/OPTCL) **only.**

  
**GENERAL MANAGER (Elec.)**  
**EHT (O&M) CIRCLE, BURLA**

## NOTICE INVITING TENDER

**ODISHA POWER TRANSMISSION CORPORATION LTD.,  
OFFICE OF THE GENERAL MANAGER (ELECTRICAL)  
E.H.T. (O&M) CIRCLE, BURLA  
e-TENDER NOTICE NO- BRL-21/2019-20.**

For and on behalf of the ODISHA POWER TRANSMISSION CORPORATION LTD., the undersigned invites bids under single bidding system in e- tendering mode only as per the following details.

| Sl. No | Tender Specification No. | Location Details.  | INDIAN RUPEES            |                               |                        | Last date of submission & Date of opening of Tender.          |
|--------|--------------------------|--|--------------------------|-------------------------------|------------------------|---|
|        |                          |  | Earnest Money Deposit.   | Cost of Tender Spec. Document | Tender Processing Fee. |   |
| 1      | BRL-21/2019-20           | Supply of total 10 Nos. of BMK i.e. 132KV BMK (04 Nos.) and 33KV BMK (06 Nos.) for 132/33KV Grid Sub-Station, Brajrajnagar | 1% of your Quoted price. | Rs. 6,720/-                   | Rs. 1673/-             | up to dt- 03.01.2020 (13.30 Hrs) and 03.01.2020 at 16.30 hrs. |

The bidders can view the tender documents from website free of cost.

The bidders who want to submit bid shall have to pay Rs 6,720/- (Rupees Six Thousand Seven Hundred Twenty only non-refundable including GST @ 12%) towards the tender cost, in the form of Demand draft/Cash only, drawn in favour of M/s General Manager, EHT (O&M) Circle, OPTCL, Burla at the office of the undersigned on or before the last date & time of submission of tender.

The bidders shall have to submit non refundable amount of Rs.1673/- (Rupees sixteen hundred seventy three) only towards the tender processing fee through **e-payment** mode. Tender processing fee acknowledgement is to be submitted along with the EMD & tender cost at the office of the undersigned on or before the last date & time of submission of tender.

The bidders shall scan the Demand Draft/Pay order/ Bank guarantee towards EMD, Tender Cost and tender processing fee acknowledgement and upload the same in the prescribed form in .gif or .jpg format in addition to sending the original as stated above.

The prospective bidders are advised to register their user ID, Password, company ID from website [www.tenderwizard.com/OPTCL](http://www.tenderwizard.com/OPTCL) by clicking on hyper link "Register Me".

Any clarifications regarding the scope of work and technical features of the tender can be had from the undersigned during office hours.

**Minimum qualification criteria of bidders: AS STIPULATED IN SECTION-II, (G.T.C.C) OF THE TENDER SPECIFICATION.**

**The Quantum of Work as in Table below**

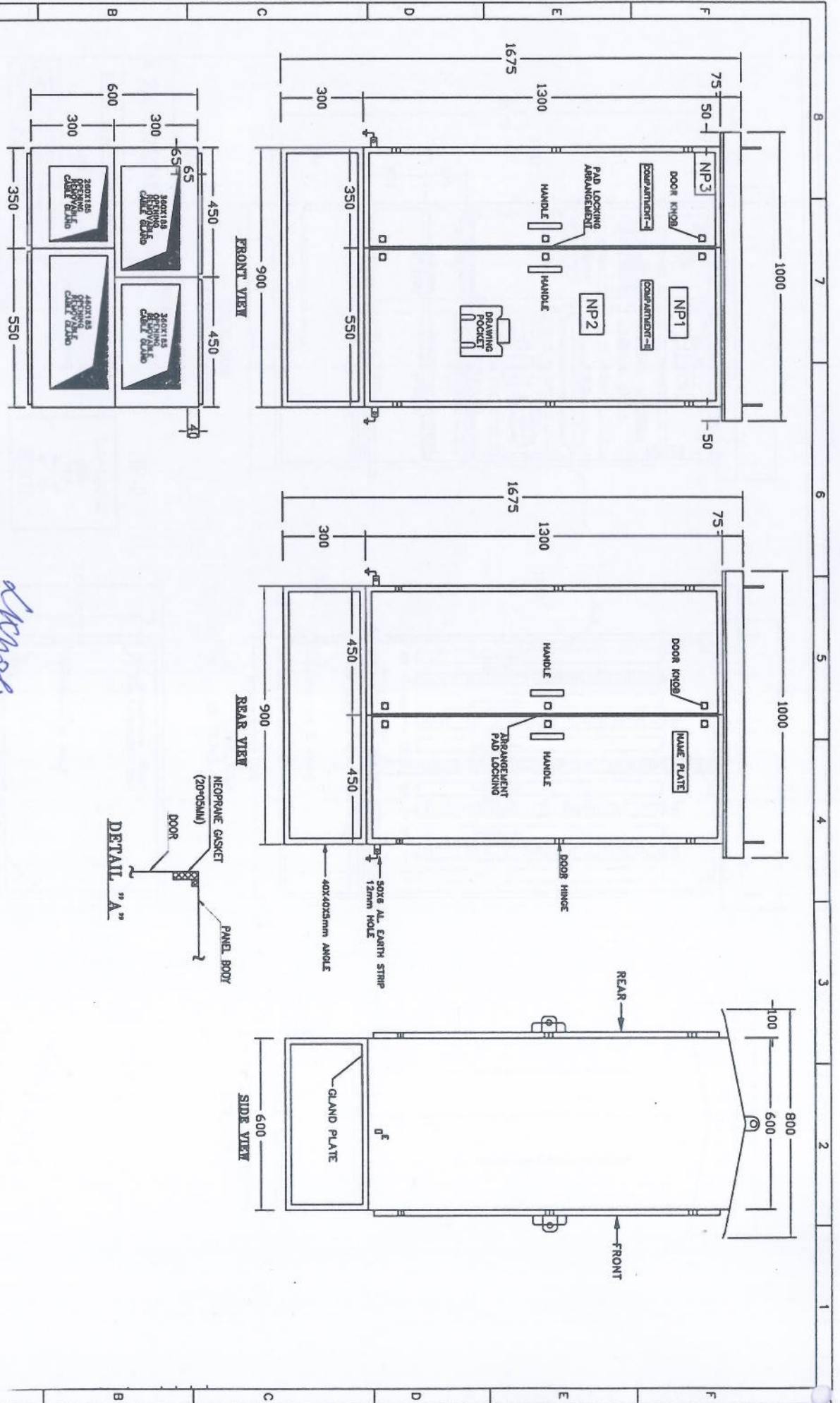
**Supply of total 10 Nos. of BMK i.e. 132KV BMK (04 Nos.) and 33KV BMK (06 Nos.) for 132/33KV Grid Sub-Station, Brajrajnagar.**

| <b>(Part-A) 132KV OUTDOOR BMK WITH THE ARRANGEMENT OF 2 NOS OF BAY IN ONE BMK</b> |                  |  |                           |      |      |
|---|------------------|--|---------------------------|------|------|
| Sl. No.   | Ckt. Description | Item Description   | Make                      | Unit | Qty. |
| 1   | PTB1, PTB2       | Power Terminal block nut and bolt type-63A   | Elmex                     | Nos. | 8    |
| 2   | PTB(3-63)        | Power Terminal block stud type-32A   | Elmex                     | Nos. | 50   |
| 3   | X1(1-40)(41-80)  | Control Terminal block stud type-41A   | Elmex                     | Nos. | 60   |
| 4   | Q(1-2)           | MCB-63A-TPN-10kA-C curve   | C&S/L&T/ABB/SCHNEIDER/HPL | Nos. | 2    |
| 5   | Q(3-12)          | MCB-32A-TPN-10kA- C curve  | C&S/L&T/ABB/SCHNEIDER/HPL | Nos. | 10   |
| 6   | Q(21-24)         | MCB-16A-2P-10kA-C curve  | C&S/L&T/ABB/SCHNEIDER/HPL | Nos. | 4    |
| 7   | H(1-2)           | Clustered LED-assembly-240VAC  | SECO/TECHNIC              | Nos. | 2    |
| 8   | K(2-3)           | Contractor-70A-3P-230V coil-1NO+1NC  | C&S/L&T/ABB/SCHNEIDER/HPL | Nos. | 2    |
| 9   | K1               | Contractor-10A-230V coil-2NO+2NC   | C&S/L&T/ABB/SCHNEIDER/HPL | No.  | 1    |
| 10  | TM1              | TIMER-0.1sec-0.5hrs-200V-240V AC-2C/0  | L&T                       | No.  | 1    |
| 11  | F(1,3,5)         | HRC fuse-6A with base  | C&S/L&T/BUSSMANN          | Nos. | 3    |
| 12  | FNeutral(2,4,6)  | Fuse neutral link-6A with base   | C&S/L&T/BUSSMANN          | Nos. | 3    |
| 13  | S1               | Toggle switch-pm-SPST-ON/OFF-10A   | STD Vendor                | No.  | 1    |
| 14  | TS1              | Thermostat-(30-60)C-15A-250VAC+1NO   | GRISHKO                   | Nos. | 2    |
| 15  | E1               | Space Heater- 100W-220 to 240VAC   | Encore ESH-01(100W)       | No.  | 1    |
| 16  | NL(1-2)          | Disconnecting type neutral link-20A  | STD Vendor                | Nos. | 2    |
| 17  | DL(1-2)          | Doorlamp-CFL-18W-230VAC  | PHILIPS                   | Nos. | 2    |
| 18  | SC1              | Plug Socket (3Pin+2Pin)-15A  | Anchor                    | No.  | 1    |
| 19  | SW(1-3)          | 2 Way ON/OFF Switch-15A  | Anchor                    | Nos. | 3    |
| 20  | BB               | Bus-Bar(30x10mm Aluminium)   |                           | Kg.  | 4    |
| 21  | PP               | POWDER PAINT   |                           | L.S  | 1    |
| 22  | BOX              | 2 mm SWG CR sheet BMK Box(1000mmx550mmx250mm)  |                           | L.S  | 1    |
| 23  | Fastner          | Fastner  |                           | L.S  | 1    |
| 24  | BBIns.           | BUS BAR INSULATOR  |                           | Nos. | 8    |
| 25  | BBSI             | BUS BAR SLEEVES  |                           | L.S  | 1    |
| 26  | DH               | DOOR HINGES WITH LOCK AND KEY  |                           | L.S  | 1    |
| 27  | DG               | DOOR GASKET  |                           | Mtr. | 22   |
| 28  | Wiring           | Interpanel Wiring as on engg. Incharge & charges with labour cost and accessories as per IS. |                           | L.S  | 1    |
| 29  | BC               | BASE CHANEL  |                           | No.  | 1    |
| 30  | BMK Box          | As per sample GTP with foundation  |                           | No.  | 1    |
| <b>(Part-B) 33KV OUTDOOR BMK WITH THE ARRANGEMENT OF 3 NOS OF BAY IN ONE BMK</b>  |                  |  |                           |      |      |
| Sl. No.   | Ckt. Description | Item Description   | Make                      | Unit | Qty. |
| 1   | PTB1, PTB2       | Power Terminal block nut and bolt type-63A   | Elmex                     | Nos. | 8    |
| 2   | PTB(3-63)        | Power Terminal block stud type-32A   | Elmex                     | Nos. | 50   |
| 3   | X1(1-40)(41-80)  | Control Terminal block stud type-41A   | Elmex                     | Nos. | 60   |
| 4   | Q(1-2)           | MCB-63A-TPN-10kA-C curve   | C&S/L&T/ABB/SCHNEIDER/HPL | Nos. | 2    |
| 5   | Q(3-12)          | MCB-32A-TPN-10kA- C curve  | C&S/L&T/ABB/SCHNEIDER/HPL | Nos. | 14   |
| 6   | Q(21-24)         | MCB-16A-2P-10kA-C curve  | C&S/L&T/ABB/SCHNEIDER/HPL | Nos. | 5    |
| 7   | H(1-2)           | Clustered LED-assembly-240VAC  | SECO/TECHNIC              | Nos. | 2    |

|    |                 |  |                           |      |    |
|----|-----------------|--|---------------------------|------|----|
|    | K(2-3)          | Contractor-70A-3P-230V coil-1NO+1NC  | C&S/L&T/ABB/SCHNEIDER/HPL | Nos. | 2  |
| 9  | K1              | Contractor-10A-230V coil-2NO+2NC   | C&S/L&T/ABB/SCHNEIDER/HPL | No.  | 1  |
| 10 | TM1             | TIMER-0.1sec-0.5hrs-200V-240V AC-2C/0  | L&T                       | No.  | 1  |
| 11 | F(1,3,5)        | HRC fuse-6A with base  | C&S/L&T/BUSSMANN          | Nos. | 3  |
| 12 | FNeutral(2,4,6) | Fuse neutral link-6A with base   | C&S/L&T/BUSSMANN          | Nos. | 3  |
| 13 | S1              | Toggle switch-pm-SPST-ON/OFF-10A   | STD Vendor                | No.  | 1  |
| 14 | TS1             | Thermostat-(30-60)C-15A-250VAC+1NO   | GRISHKO                   | Nos. | 2  |
| 15 | E1              | Space Heater- 100W-220 to 240VAC   | Encore ESH-01(100W)       | No.  | 1  |
| 16 | NL(1-2)         | Disconnecting type neutral link-20A  | STD Vendor                | Nos. | 2  |
| 17 | DL(1-2)         | Doorlamp-CFL-18W-230VAC  | PHILIPS                   | Nos. | 2  |
| 18 | SC1             | Plug Socket (3Pin+2Pin)-15A  | Anchor                    | No.  | 1  |
| 19 | SW(1-3)         | 2 Way ON/OFF Switch-15A  | Anchor                    | Nos. | 3  |
| 20 | BB              | Bus-Bar(30x10mm Aluminium)   |                           | Kg.  | 4  |
| 21 | PP              | POWDER PAINT   |                           | L.S  | 1  |
| 22 | BOX             | 2 mm SWG CR sheet BMK<br>Box(1000mmx550mmx250mm)   |                           | L.S  | 1  |
| 23 | Fastner         | Fastner  |                           | L.S  | 1  |
| 24 | BBIns.          | BUS BAR INSULATOR  |                           | Nos. | 8  |
| 25 | BBSI            | BUS BAR SLEEVES  |                           | L.S  | 1  |
| 26 | DH              | DOOR HINGES WITH LOCK AND KEY  |                           | L.S  | 1  |
| 27 | DG              | DOOR GASKET  |                           | Mtr. | 22 |
| 28 | Wiring          | Interpanel Wiring as on engg. Incharge & charges with labour cost and accessories as per IS. |                           | L.S  | 1  |
| 29 | BC              | BASE CHANEL  |                           | No.  | 1  |
| 30 | BMK Box         | As per sample GTP with foundation.   |                           | No   | 1  |

### GENERAL NOTES :-

1. ALL DIMENSIONS ARE IN mm. WITH TOLERANCE OF +5mm.
2. ALL THE FABRICATION SHALL BE DONE FROM 2mm. THICK CRCA SHEET STEEL
3. DEGREE OF PROTECTION:-IP55 OF IS = 13947/IEC 60947
4. NEOPRENE GASKET SHALL BE PROVIDED AS PER IS: 11149 FOR ALL DOORS, REMOVABLE COVERS PLATES.
5. PAINTING SHADE SHALL BE AS FOLLOWING:-
  - a) INTERIOR & EXTERIOR SMOKE GREY SHADE-692 OF IS:5
  - b) PAINT THICKNESS MINIMUM 60 MICRONS.
6. MK MADE OF CRCA SHEET STEEL ENCLOSURE AND SHALL BE DUST WATER AND VERMIN PROOF.
7. MK SHALL BE PROVIDED WITH DOUBLE HINGED DOORS WITH PAD LOCKING ARRANGEMENTS.
8. ENTRY OF CABLE FROM BOTTOM BY MEANS OF WEATHER PROOF AND DUST PROOF CONNECTIONS.
9. 150mm. MINIMUM CLEARANCE BETWEEN TWO ROWS OF TERMINAL BLOCKS.
10. ALL TERMINAL WAYS SHALL BE NUMBERED FROM TOP AND EACH TERMINAL ROW MARKED WITH REFERENCE
11. DOOR SHALL BE EARTHED WITH 2.5Sqmm. PVC Cu. FLEXIBLE GREEN WIRE.
12. THE BOX SHALL GENERALLY CONFIRM TO BE TEST IN ACORDANCE WITH IS:5039/IS:8623, IEC-60439
13. THE BAY MARSHLLING KIOSK SHALL BE PROVIDED WITH ALLUMINIUM DANGER PLATE AND DRAWING POCKET TO BE PROVIDED.
14. ALL OTHER WIRING WHICH IS NOT SPECIFICALLY MENTIONED SHALL BE DONE WITH 2.5Sqmm. COPPER WIRE.
15. APPROX. WEIGHT- 180Kg.



BOTTOM VIEW

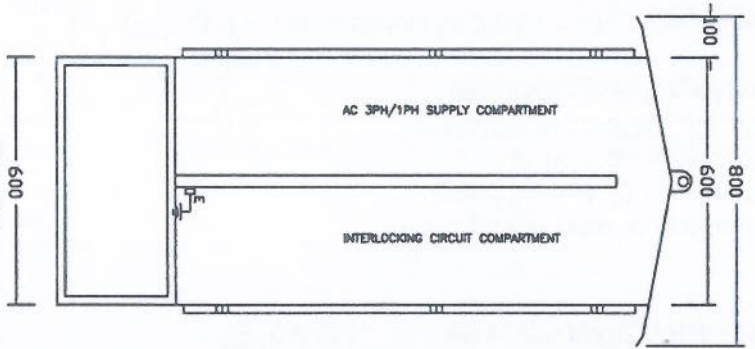
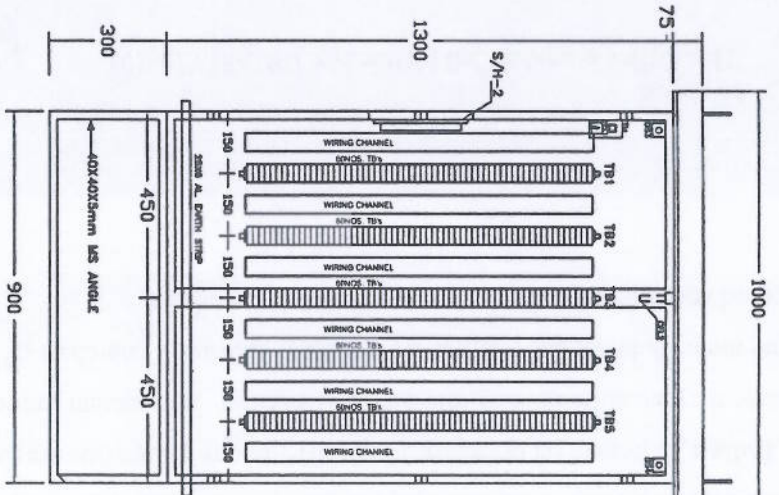
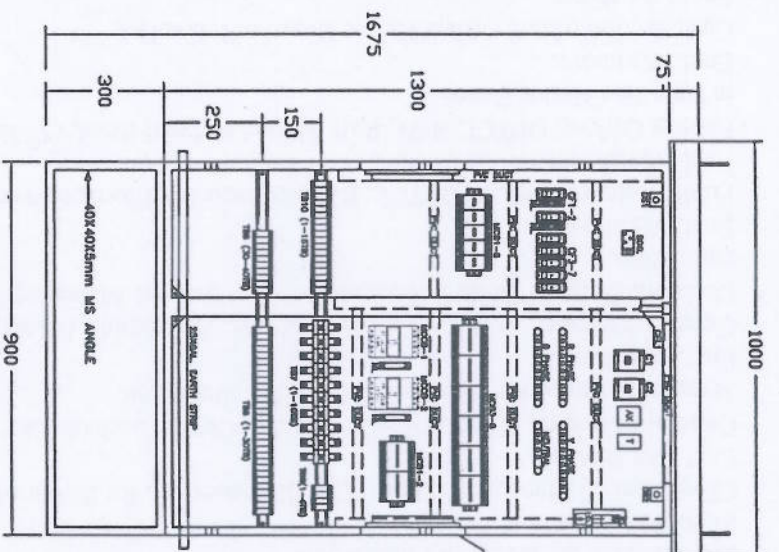
FRONT VIEW

REAR VIEW

SIDE VIEW

DETAIL "A"

*General Manager*  
**E.H.T. (O & M) Circle, Burtis**



NP-1  
220/132/33KV BMK

PANEL NAME PLATE DETAIL

NP-3

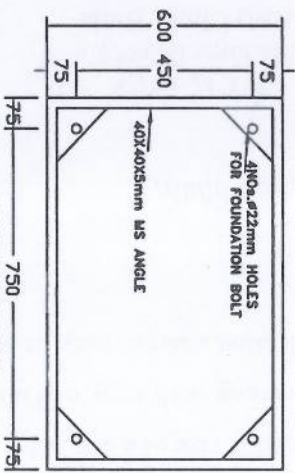
NEC  
NITVA ELECTROCONTROLS PVT LTD.  
6-7, SECTOR-61, INDRA-201300 (M-3)  
DELHI-110028  
E-MAIL: info@nitvacontrols.com

MANUFACTURER NAME PLATE DETAIL



NP-2

DANGER PLATE



*AKM*  
General Manager  
E.H.T. (O & M) Circle, Burla