



ODISHA POWER TRANSMISSION CORPORATION LIMITED

OFFICE OF THE SENIOR GENERAL MANAGER,
[TRANSMISSION PROJECT & CONSTRUCTION]

Gr. & 1st FLOOR, TECHNICAL BUILDING, BHOI NAGAR, BHUBANESWAR,
PHONE: 0674 – 2546353, FAX: 0674- 2547261

e-mail: sgm.tp@optcl.co.in

No. TR/WKL/IV/403/(Vol II)/

To

74 (5) dated, 05/01/13

M/s Sterling and Wilson Limited,
(Formerly M/s PSC Engineers (P) Ltd.,)
A 17/8, Suryanagar, In front of S.P. Vigilance Office,
Suryanagar, Bhubaneswar-751003.

[Lead partner of Joint Venture of M/s Sterling and Wilson Limited (formerly M/s PSC Engineers (P) Ltd., Kolkata) and M/s Powercon Projects & Associates Ltd, (Other partner)].

Sub.: Construction of grid sub-station, Transmission lines and associated system at Kalunga of Orissa against Package: 616-04: Approval of drawings, hardware materials, clamps & connectors of M/s Jainco transmission Ltd, Kolkata :- regarding.

Ref: (i) Tender Specification No.: NESCL/OPTCL/CS-OS-616-04 of OPTCL
(ii) NOA of 1st contract No. 7017 dated 23.10.2010 of Sr.G.M.(CPC), OPTCL.
(iii) NOA of 2nd contract No. 7012 dated 23.10.2010 of Sr.G.M.(CPC), OPTCL.
(iv) Your letter no. SWL/PPAL(2012)/OPTCL/TP&C/PKH-04-542 dated 11.12.2012
(v) Your letter no. SWL/PPAL(2011-12)/OPTCL/CPC/PKH-616-04-593 dated 22.12.2012

Dear Sirs,

With reference to above, the following drawings, GTP submitted by you for the Construction of grid sub-station, Transmission lines and associated system at Kalunga against Package: 616-04, are hereby approved subject to incorporation of the modifications/corrections marked on the body of the drawing in red ink and the terms and conditions indicated below:

Sl. No.	Items	Drawing No. & Rev.	No Of Sheets
1.	TEE connector MOOSE run MOOSE drop	JTL-TC-(Z)-(M)09A	1
2.	Tee Clamp TWIN MOOSE run to MOOSE drop Conductor	JTL-T(TWIN)-(M)-(M)09	1
3.	Spacer MOOSE to MOOSE Conductor	JTL-SP(M)-(M)-09	1
4.	PI Clamp for MOOSE conductor	JTL-P.I.(C)-(M)-09	1
5.	LA pad Clamp for MOOSE conductor	JTL-LA.(M)-(M)-09	1
6.	CT stud Clamp/CVT Stud Clamp/IVT stud Clamp for MOOSE conductor	JTL-CT/CVT/IVT--(M)-09	1
7.	Isolator/CB Stud Clamp	JTL-IP(C)-(M)-09	1
8.	Jumper Cone for MOOSE conductor	JTL-JPC-(M)09	1
9.	TEE connector ZEBRA run MOOSE drop	JTL-TC-(Z)-(M)09A	1

10	Single Tension String for ACSR MOOSE conductor	JTL/ STM/0012	1
11	Double Tension String for ACSR MOOSE conductor	JTL/DTM/0011	1
12	Single Suspension String for ACSR MOOSE conductor	JTL/ SSTM/0012	1

1 The materials shall be manufactured and erected in conformity to the Specification/ Bid document No.: NESCL/OPTCL/CS-OS-616-04 of OPTCL.

2 You will circulate the copies of the above-approved drawings to all concerned field officials of OPTCL, as per the following:

- a EE, EHT Construction Division, Jharsuguda
- b GM, EHT Construction Circle, Sambalpur
- c S.D.O. EHT Construction Sub-Division, Rourkela.

3 The Above approval of the drawings does not absolve you of the responsibility to ensure implementation of the statutory requirements as well as the norms and practices of OPTCL. Any change, if required during execution in the interest of the work, shall be undertaken by you in consultation and approval of the concerned engineers of OPTCL.

4 One set of the above approved drawing are enclosed for your reference and further necessary action.

Yours faithfully,

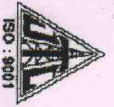
Encl.: As above

Senior General Manager (TP & Con.)

C.C. to—

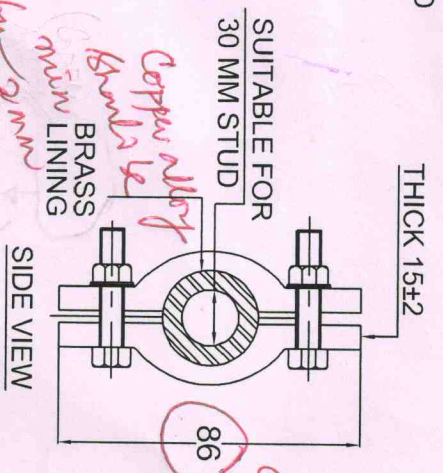
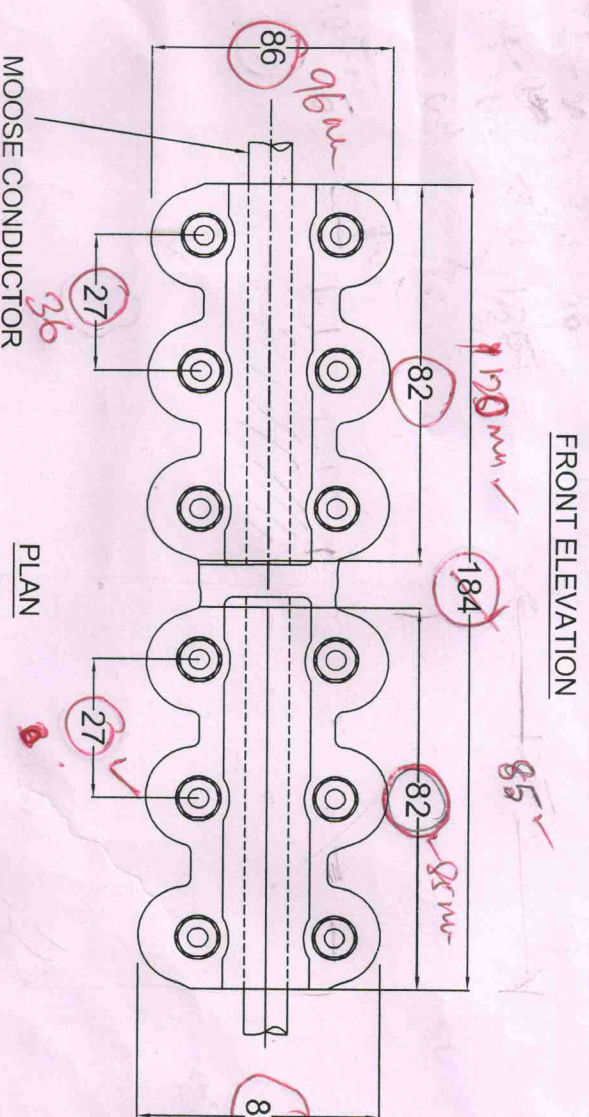
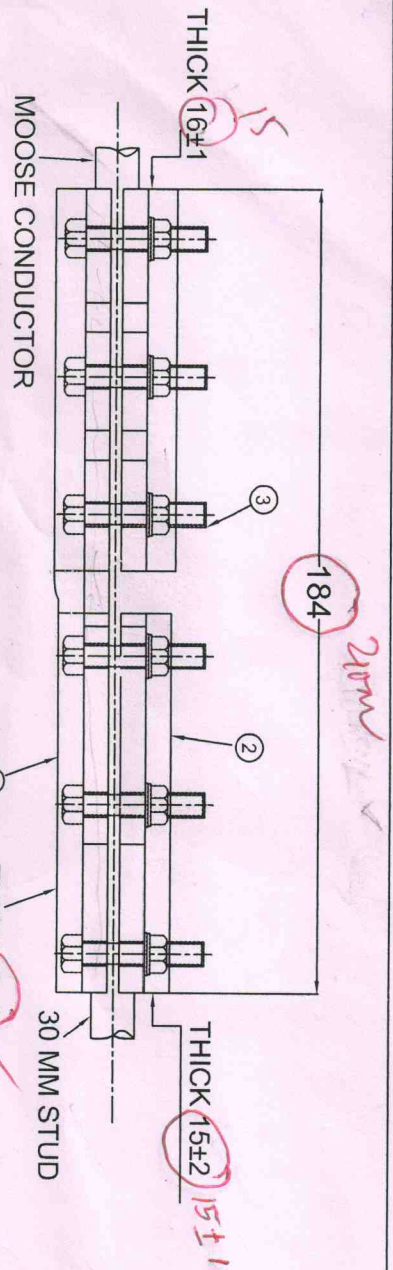
1 AGM EHT Construction Division, Jharsuguda/S.D.O. EHT Construction Sub- Division, Rourkela, GM, EHT Construction Circle, Sambalpur for information and necessary action.

2 CGM, Construction/ Sr.GM CPC, OPTCL for kind information.



JAINCO

SL. NO	DESCRIPTION	QTY. PER STRING	MATERIAL
1.	CONNECTOR BODY	1	ALUMINIUM ALLOY
2.	CLAMPING PIECE M12 HEX. BOLT WITH NUT, PLAIN WASHER & SPRING WASHER	2	ALUMINIUM ALLOY (Electrical) 10/D M/S SHEL HDG & Con.) OPTCL, Bhubaneswar
3.			



RECOMMENDED

STERLING WILSON LTD. KOLKATA

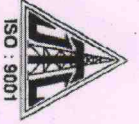
General Manager (Electrical)
O/o. SGM (Electrical)
OPTCL, Bhubaneswar

CUSTOMER:- ORISSA POWER TRANSMISSION CORPORATION LTD
 ORDER NO:- SR. GM-CPC-TENDER-PKG616-04-GOPINATH
 KALUNGA-3/2010-7012
 PROJECT NAME:- 132/33KV SUBSTATION, TRANSMISSION LINE & ASSOCIATED SYSTEMS AT KALUNGA
 CONTRACTOR:- JV OF STERLING AND WILSON LTD WITH POWERCON PROJECTS & ASSOCIATED ENTERPRISES LTD

TECHNICAL DATA :-
 1) GALVANISING CONFORMS TO IS:2633/EQUIVALENT
 2) SPECIFICATION:- AS PER IS:5561
 3) ALL DIMENSIONS ARE IN MM

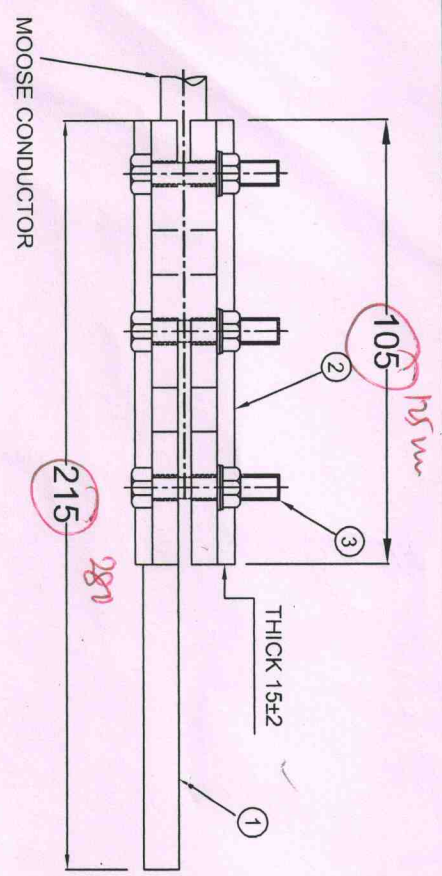
JAINCO TRANSMISSION LTD. 70, DIAMOND HARBOUR ROAD, KOLKATA - 700 023 INDIA		C.T. STUD CLAMP / C.V.T. STUD CLAMP / I.V.T. STUD CLAMP FOR MOOSE CONDUCTOR		GEN. TOLERANCE :- ±5%	
DRG. NO.	JTL-CT/CVT/IVT-(M)09	DATE :-	28.12.12	REV :-	00
SCALE :-	N.T.S.	APPROVED :-	AS		

FILE DEST :- E:\AUTOCAD DRG\GOLAM_25.06.10\POWERCON_28.12.12\CT. STUD CLAMP / C.V.T. STUD CLAMP / I.V.T. STUD CLAMP FOR (M) COM

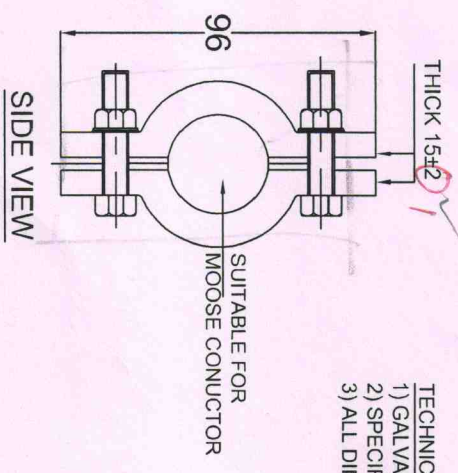


JAINCO

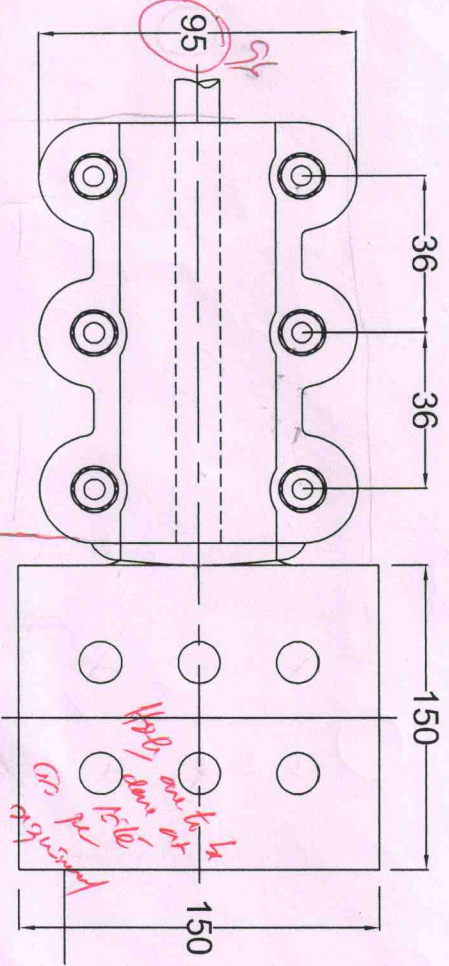
SL. NO	DESCRIPTION	QTY. PER STRING	MATERIAL
1.	CONNECTOR BODY	1	ALUMINIUM ALLOY
2.	CLAMPING PIECE	1	ALUMINIUM ALLOY
3.	M12 HEX. BOLT WITH NUT, PLAIN WASHER & SPRING WASHER	6	MILD STEEL HDG



FRONT ELEVATION



SIDE VIEW



CHECKED
PLAN

Manager (Electrical)
O/o. SGM (TP & Con.)
OPTCL, Bhubaneswar

RECOMMENDED

TECHNICAL DATA :-
1) GALVANISING CONFORMS TO IS:2633/EQUIVALENT
2) SPECIFICATION:- AS PER IS:5561
3) ALL DIMENSIONS ARE IN MM
General Manager (Electrical)
O/o. SGM (TP & Con.)
OPTCL, Bhubaneswar



APPROVED

General Manager
Transmission & Construction
OPTCL, Bhubaneswar

CUSTOMER:- ORISSA POWER TRANSMISSION CORPORATION LTD
ORDER NO:- SR. GM-CPC-TENDER-PKG616-04-GOPINATHPUR & KALUNGA-3/2010-7012
PROJECT NAME:- 132/33KV SUBSTATION, TRANSMISSION LINE & ASSOCIATED SYSTEMS AT KALUNGA
CONTRACTOR:- JV OF STERLING AND WILSON LTD WITH POWERCON PROJECTS & ASSOCIATES LTD.

JAINCO TRANSMISSION LTD.
70, DIAMOND HARBOUR ROAD,
KOLKATA - 700 023
INDIA

ISOLATOR/C.B. PAD CLAMP FOR MOOSE CONDUCTOR	GEN. TOLERANCE :- ±5%
DRAWN :- G.D.Z	CHECKED :- P.GHOSH
DATE :- 28.12.12	REV :- 00
DRG. NO. JTL-I/P (CH/M)09	SCALE :- N.T.S.
APPROVED :-	AS

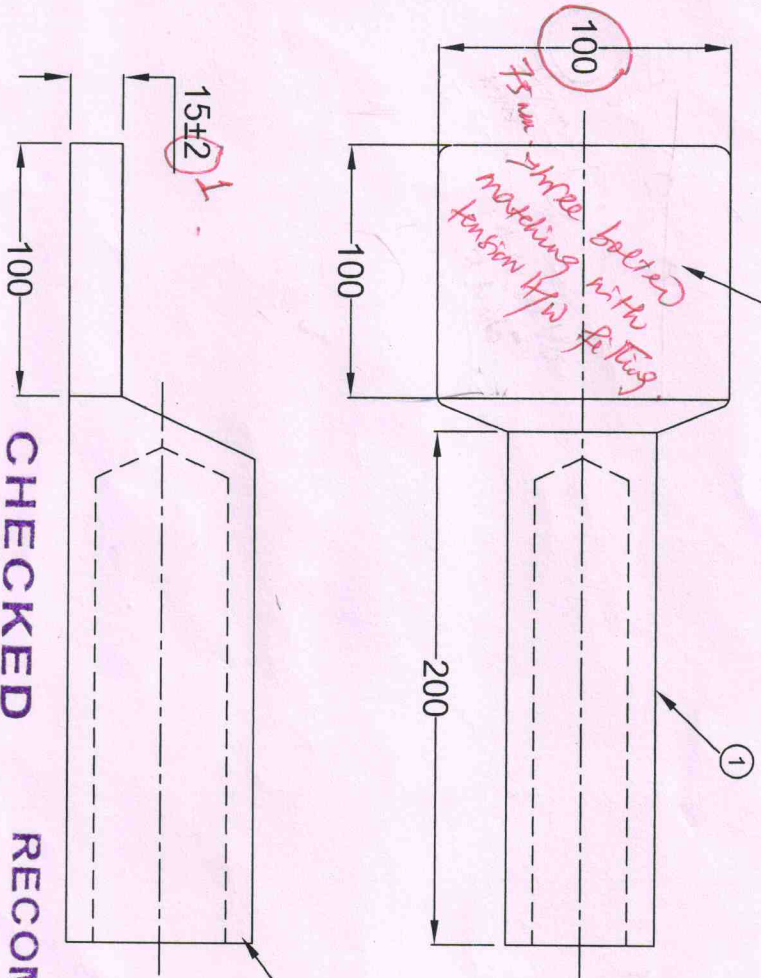
FILE DEST :- E:\AUTOCAD DRG\GOLAM_25.06.10\POWERCON_28.12.12\INSULATOR PAD CLAMP FOR (M) CONDUCTOR



JAINCO

SL. NO	DESCRIPTION	QTY. PER STRING	MATERIAL
1.	JUMPER CONE	1	ALUMINIUM ALLOY

HOLES TO BE DONE IN SITE AS PER REQUIREMENT WHILE ERECTION



I.D. 34
O.D. 54

M16 Hex bolt with nut (3 nos)

APPROVED
with Correction



Signature

Sr. General Manager
Transmission Project & Construction

CHECKED

RECOMMENDED

Manager (Electrical)
O/o. SGM (TP & Con.)
APTEL, Bhubaneswar

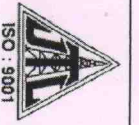
General Manager (Electrical)
O/o. SGM (TP & Con.)
OPT JAINCO TRANSMISSION LTD.
70, DIAMOND HARBOUR ROAD,
KOLKATA - 700 023
INDIA

ORDER NO.: SR. GM-CPC-TENDER-PKG616-04-GOPINATHPUR & KALUNGA-3/2010-7012
PROJECT NAME:- 132/33KV SUBSTATION, TRANSMISSION LINE & ASSOCIATED SYSTEMS AT KALUNGA
CONTRACTOR:- JV OF STERLING AND WILSON LTD WITH POWERCON PROJECTS & ASSOCIATES LTD.

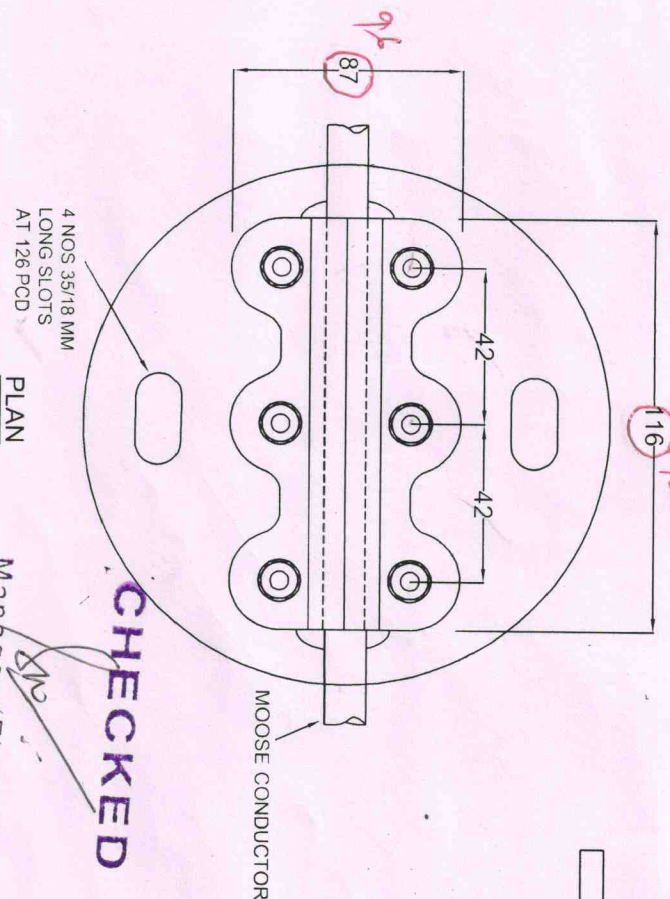
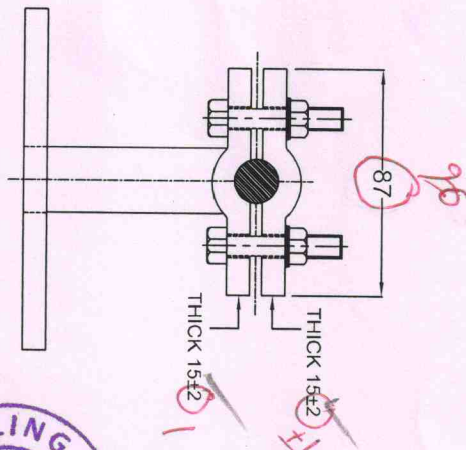
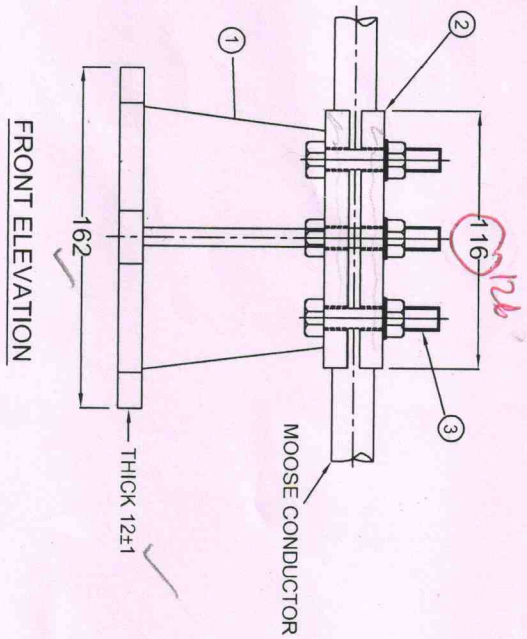
JUMPER CONE FOR MOOSE CONDUCTOR	GEN. TOLERANCE :- ±5%	
	DRAWN :- G.D.Z.	CHECKED :- P.GHOSH
	DATE :- 28.12.12	REV :- 00
	SCALE :- N.T.S.	

FILE DEST :- E:\AUTOCAD DRG\GOLAM_25.06.10\POWERCON_28.12.12\JUMPER CONE FOR MOOSE CONDUCTOR

TECHNICAL DATA :-
1) MATERIAL :- ALUMINIUM
2) ALL DIMENSIONS ARE IN MM



JAINCO



SL. NO	DESCRIPTION	QTY. PER STRING	MATERIAL
1.	CONNECTOR BODY	1	ALUMINIUM ALLOY
2.	CLAMPING PIECE	1	ALUMINIUM ALLOY
3.	M12 HEX. BOLT WITH NUT, PLAIN WASHER & SPRING WASHER	6	MILD STEEL HDG

TECHNICAL DATA :-
 1) GALVANISING CONFORMS TO IS:2633/EQUIVALENT
 2) SPECIFICATION:- AS PER IS:5561
 3) ALL DIMENSIONS ARE IN MM

CHECKED

RECOMMENDED

APPROVED
 With Certifications



Sr. General Manager
 Transmission Project & Construction
 OPTCL, Bhubaneswar

CUSTOMER:- ORISSA POWER TRANSMISSION CORPORATION LTD
 ORDER NO:- SR. GM-OPC-TENDER-PKG616-04-GOPINATHPUR & KALUNGA-3/2010-7012
 PROJECT NAME:- 132/33KV SUBSTATION, TRANSMISSION LINE & ASSOCIATED SYSTEMS AT KALUNGA
 CONTRACTOR:- JV OF STERLING AND WILSON LTD WITH POWERCON PROJECTS & ASSOCIATES LTD.

JAINCO TRANSMISSION LTD. 70, DIAMOND HARBOUR ROAD, KOLKATA - 700 023 INDIA		GEN. TOLERANCE :- ±5%	
MOOSE CONDUCTOR		DRAWN :-	CHECKED :-
DRG. NO. JTL-PL(O)-(M)09		G.D.2	P.G.HOSH.
DATE :- 28.12.12		REV :- 00	SCALE :- N.T.S.
APPROVED :-		APPROVED :-	

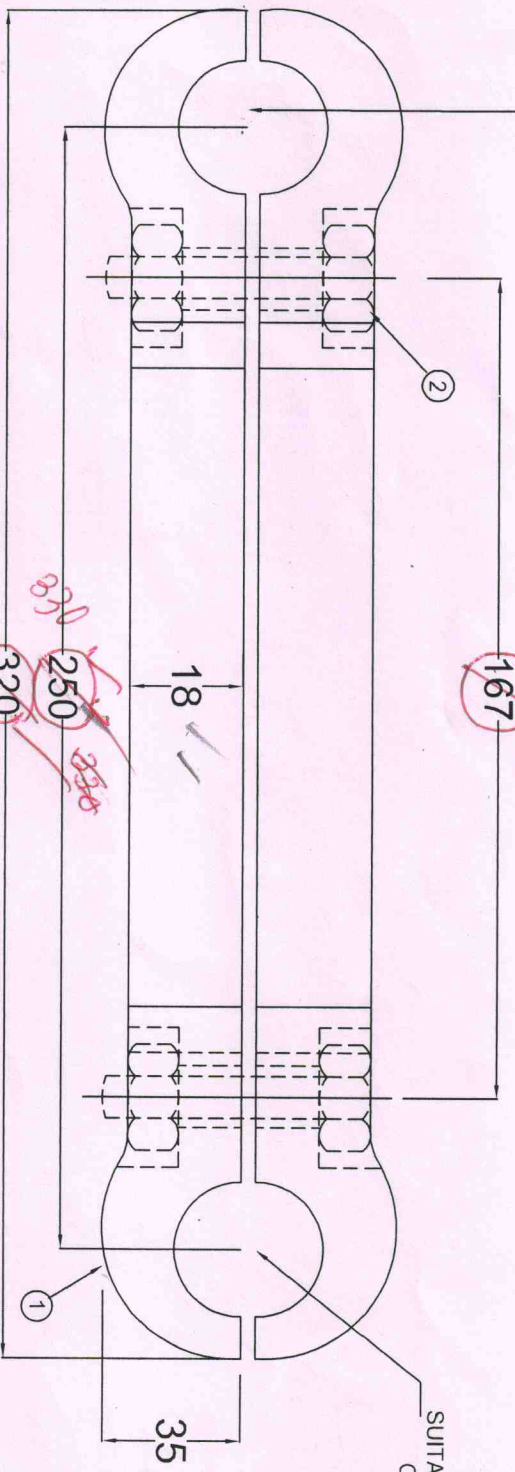
Manager (Electrical)
 OPTCL, Bhubaneswar

General Manager
 OPTCL, Bhubaneswar



JAINCO

SL. NO	DESCRIPTION	QTY. PER STRING	MATERIAL
1.	SPACER BODY	2	ALUMINIUM ALLOY
2.	M12 HEX. BOLT WITH NUT, PLAIN WASHER & SPRING WASHER	2	MILD STEEL HDG



TECHNICAL DATA :-
 1) GALVANISING CONFORMS TO IS:2633/EQUIVALENT
 2) ALL DIMENSIONS ARE IN MM

CHECKED



Signature

APPROVED
 With Corrections.

Sr. General Manager
 Transmission Department
 Bhubaneswar

CUSTOMER:- ORISSA POWER TRANSMISSION CORPORATION Ltd.
 ORDER NO:- SR. GM-CPC-TENDER-PKG616-04-GOPINATHPUR & KALUNGA
 KALUNGA-3/2010-7012
 PROJECT NAME:- 132/33KV SUBSTATION, TRANSMISSION LINE & ASSOCIATED SYSTEMS AT KALUNGA
 CONTRACTOR:- JV OF STERLING AND WILSON LTD WITH POWERCON PROJECTS & ASSOCIATES LTD.

JAINCO TRANSMISSION L.T.D.
 70, DIAMOND HARBOUR ROAD,
 KOLKATA - 700 023
 INDIA

SPACER MOOSE TO MOOSE CONDUCTOR		GEN. TOLERANCE :- ±5%	
DRG. NO. :- JTL-SP(M)/M09	DATE :- 28.12.12	CHECKED :-	APPROVED :-
		P.GHOSH.	A.S.
		REV :- 00	SCALE :- N.T.S.

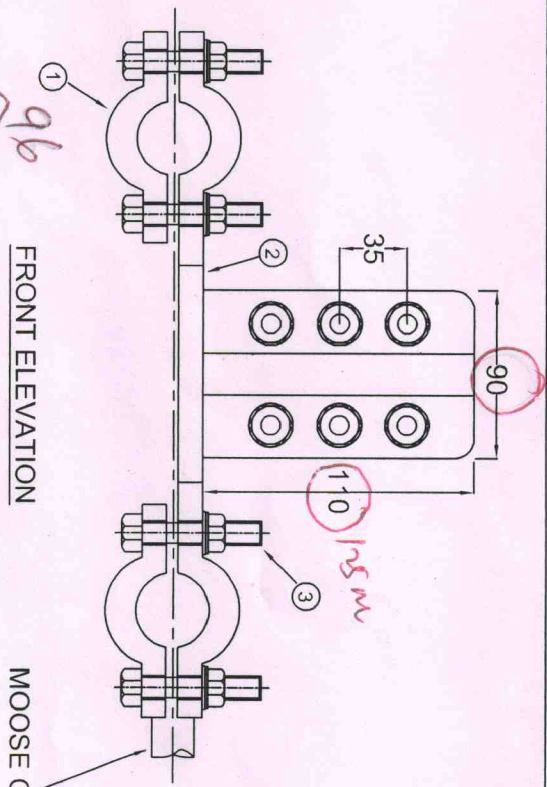
Manager (Electrical)
 (T.P. & Con.)
 General Manager
 (T.P. & Con.)
 OPTCL, Bhubaneswar



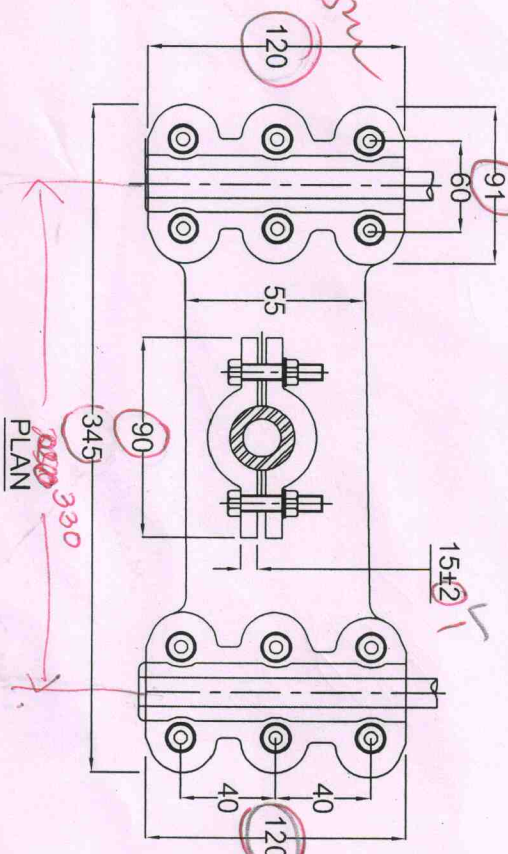
916 mm

JAINCO

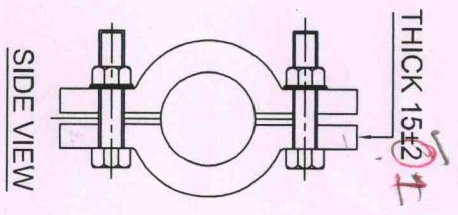
SL. NO	DESCRIPTION	QTY. PER STRING	MATERIAL
1.	CONNECTOR BODY	1	ALUMINIUM ALLOY
2.	CLAMPING PIECE	3	ALUMINIUM ALLOY
3.	M12 HEX. BOLT WITH NUT, PLAIN WASHER & SPRING WASHER	18	MILD STEEL HDG



MOOSE CONDUCTOR



PLAN



SIDE VIEW



CHECKED



Manager (Electrical)
O/o
OPTCL, Bhubaneswar

CUSTOMER:- ORISSA POWER TRANSMISSION CORPORATION LTD
 ORDER NO:- SR. GM-CPC-TENDER-PKG616-04-
 KALUNGA-3/2010-7012
 PROJECT NAME:- 132/33KV SUBSTATION, TRANSMISSION LINE & ASSOCIATED SYSTEMS AT KALUNGA
 CONTRACTOR:- JV OF STERLING AND WILSON POWERCON PROJECTS & ASSOCIATED SYSTEMS AT KALUNGA

APPROVED

JAINCO TRANSMISSION LTD,
70, DIAMOND HARBOUR ROAD,
KOLKATA - 700 023
INDIA

TECHNICAL DATA :-
 1) GALVANISING CONFORMS TO IS:2633/EQUIVALENT
 2) SPECIFICATION:- AS PER IS:5561
 3) ALL DIMENSIONS ARE IN MM

Sr. General Manager
Transmission Project
OPTCL, Bhubaneswar

DRG. NO.	DATE	REV.	SCALE
JTL-TTWIN(M)-M09	28.12.12	00	N.T.S.

GEN. TOLERANCE :- ±5%
 DRAWN :-
 G.D.Z.
 P.GHOSH
 AS

RECOMMENDED

OPTCL, Bhubaneswar

FILE DRS :- ENAUTCAD DRGOLAM, 25.06.10; POWERCON, 28.12.12; T-CLAMP TWIN MOOSE TO MOOSE CONDUCTOR.

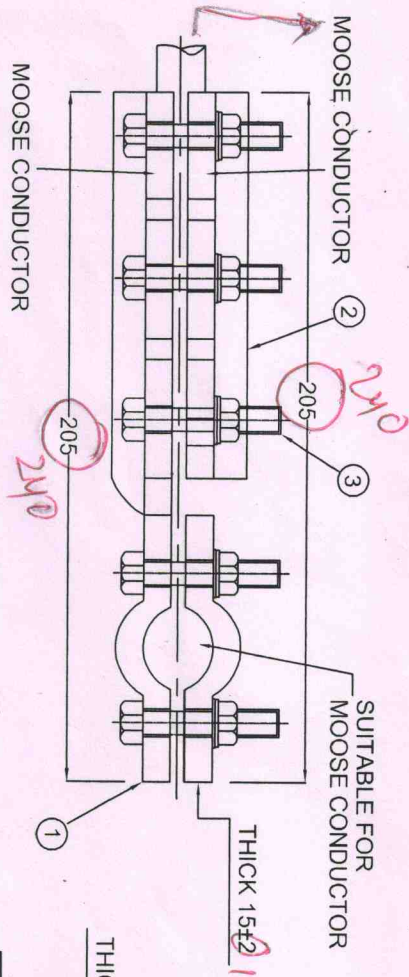


JAINCO

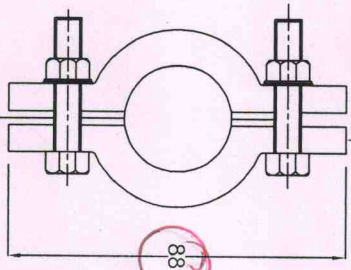
SL. NO	DESCRIPTION	QTY. PER STRING	MATERIAL
1.	CONNECTOR BODY	1	ALUMINIUM ALLOY
2.	CLAMPING PIECE	2	ALUMINIUM ALLOY
3.	M12 HEX. BOLT WITH NUT, PLAIN WASHER & SPRING WASHER	12	MILD STEEL HDG

TECHNICAL DATA :-
 1) GALVANISING CONFORMS TO IS:2633/EQUIVALENT
 2) SPECIFICATION:- AS PER IS:5561
 3) ALL DIMENSIONS ARE IN MM

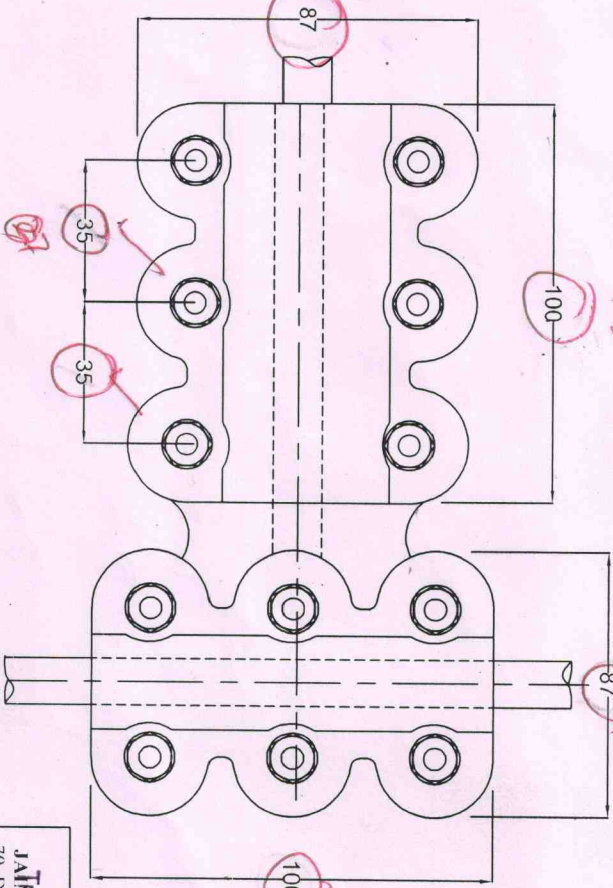
FRONT ELEVATION



SIDE VIEW

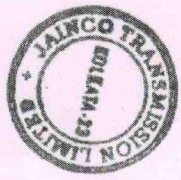


PLAN



APPROVED
 with Corrections

CHECKED



Manager (Electrical)
 O/o. SGM (TF & Con.)
 OPTCL, Bhubaneswar

CUSTOMER:- ORISSA POWER TRANSMISSION CORPORATION LTD
 ORDER NO:- SR. GM-CFC-TENDER-PKG616-04-GOPINATHPUR & KALUNGA-3/2010/412
 PROJECT NAME:- 132/33KV SUBSTATION TRANSMISSION LINE & ASSOCIATED SYSTEMS AT KALUNGA
 CONTRACTOR:- JV OF STERLING AND WILSON LTD WITH POWERCON PROJECTS & ASSOCIATES LTD.

GEN. TOLERANCE ± 0.15%

Sr. General Manager
 Jainco Transmission Ltd
 70, DADAR BAR ROAD
 KOLKATA - 700 025
 INDIA

DRG. NO. JTL-TC-(ZY)M09A

DRAWN :-
 G.D.Z.
 DATE :- 28.12.12
 REV :- 00
 SCALE :- N.T.S.

FILE DEST : E:\AUTOCAD DRG\GLAM_25.06.10\POWERCON_28.12.12\TEE CONNECTOR MOOSE TO MOOSE CONDUCTOR.

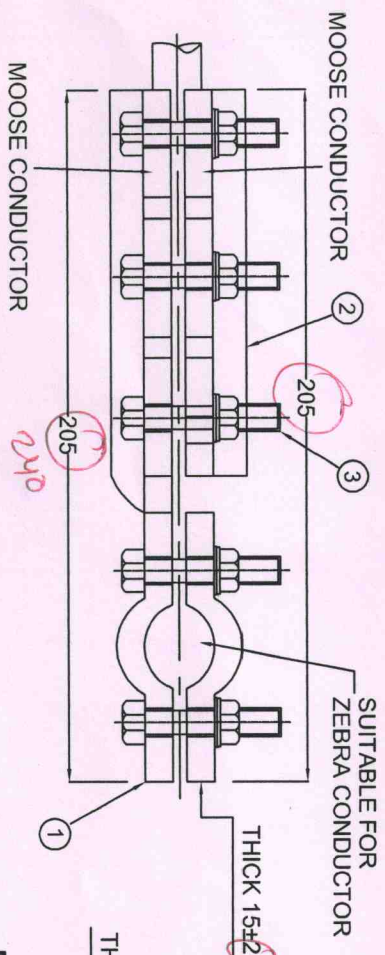


JAINCO

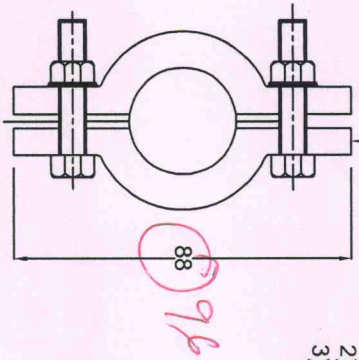
SL. NO	DESCRIPTION	QTY. PER STRING	MATERIAL
1.	CONNECTOR BODY	1	ALUMINIUM ALLOY
2.	CLAMPING PIECE	2	ALUMINIUM ALLOY
3.	M12 HEX. BOLT WITH NUT, PLAIN WASHER & SPRING WASHER	12	MILD STEEL HDG

TECHNICAL DATA :-
 1) GALVANISING CONFORMS TO IS:2633/EQUIVALENT
 2) SPECIFICATION:- AS PER IS:5561
 3) ALL DIMENSIONS ARE IN MM

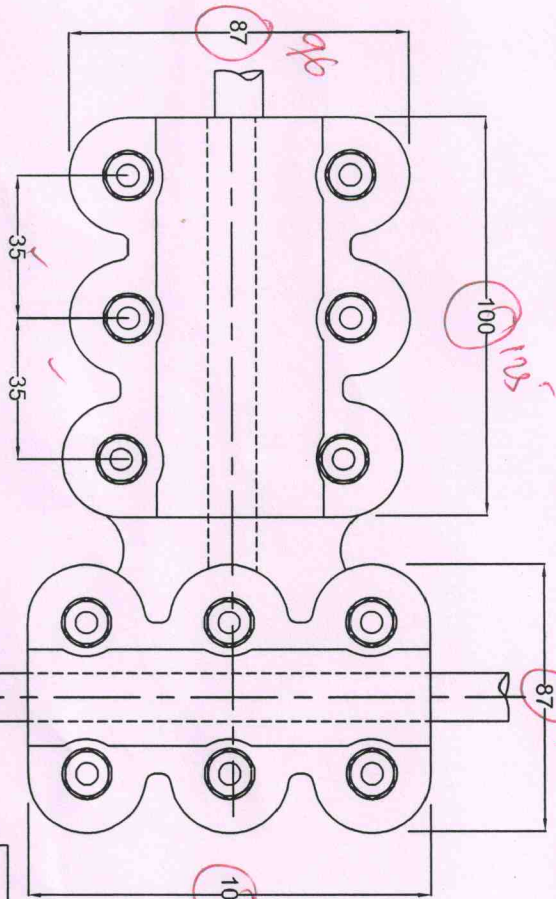
FRONT ELEVATION



SIDE VIEW



PLAN



CUSTOMER:- ORISSA POWER TRANSMISSION CORPORATION LTD
 ORDER NO:- SR. GM-QPC-TENDER-PKG616-04-GOPINATHPUR & KALUNGA-3/2010-7012
 PROJECT NAME:- 132/33KV SUB STATION AT KALUNGA ASSOCIATED SYSTEMS AT KALUNGA
 CONTRACTOR:- JV OF STERLING AND WILSON LTD WITH POWERCON PROJECTS & ASSOCIATES LTD.



Manager (Electrical)
 O/o. SGM (TP & Con.)
 OPTCL, Bhubaneswar

CHECKED

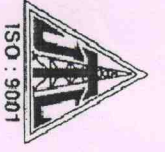
JAINCO TRANSMISSION LTD,
 7th FLOOR, DIAMOND HARBOUR ROAD,
 KOLKATA - 700 023
 INDIA

TEE CONNECTOR ZEBRA RUN MOOSE DROP CONDUCTOR	GEN. TOLERANCE	DATE :- 28.12.12	REV :- 00	SCALE :- N.T.S.
	DRAWN :-			

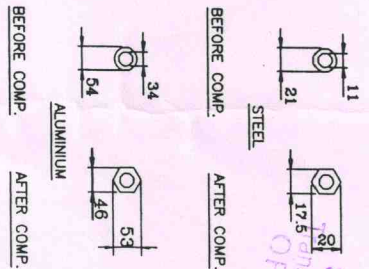
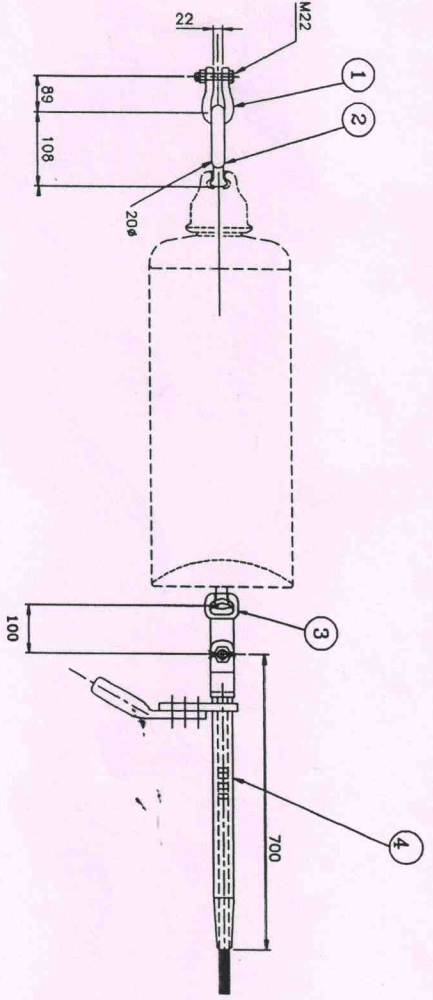
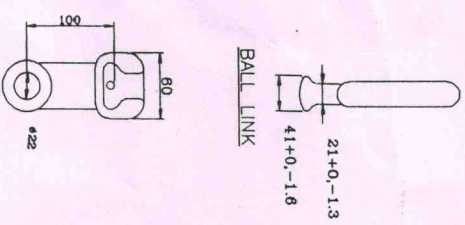
Sf. General Manager
 Transmission Project & Construction
 OPTCL, Bhubaneswar

APPROVED
 With Corrections

RECOMMENDED



JAINCO



SL. NO.	DESCRIPTION	QTY. PER STRING	MATERIAL	UTS KN
4.	COMP./DEADEND CLAMP	1	ALUM. & STEEL	153
3.	H.H. SOCKET EYE	1	FORGED STEEL	120
2.	BALL LINK	1	FORGED STEEL	120
1.	ANCHOR SHACKLE	1	FORGED STEEL	120

RECOMMENDED

CHECKED

I	Weight of assembly - 7.90 Kgs.
H	General Tolerance ±3%
G	All dimensions are in mm.
F	Size of ball & socket 20mm. to IS:2486
E	Stainless Steel R-clip shall be provided with socket.
D	All ferrous parts shall be hot dip galvanised as per IS:2486
C	Fittings shall conform to IS:2486
B	Breaking strength of Hardware assembly 120KN.
A	Breaking strength of clamp 95% of UTS of Conductor



Manager
O/o. SGM
OPTCL,
Bhubaneswar

General Manager
OPTCL,
Bhubaneswar

JAINCO TRANSMISSION LTD.
70, DIAMOND HARBOUR ROAD,
KOLKATA - 700 023
INDIA

CUSTOMER:- ORISSA POWER TRANSMISSION CORPORATION LTD
 ORDER NO:- SR. GM-CPC-TENDER-PKG616-04-GOPINATHPUR & KALUNGA-3/2010-7012
 PROJECT NAME:- 132/33KV SUBSTATION, TRANSMISSION LINE & ASSOCIATED SYSTEMS AT KALUNGA
 CONTRACTOR:- JV OF STERLING AND WILSON LTD WITH POWERCON PROJECTS & ASSOCIATES LTD.

SINGLE TENSION STRING FOR ACSR MOOSE	DRAWN :-	CHECKED :-	APPROVED :-
	G.D.Z.	N.B.M.	A.S.

DRG NO :- JTL/STM/0012 DATE:-05.11.12 REV:-00 SCALE:-NTS
 FILE DEST : E:\AUTOCAD DRG\GOLAM_25.06.10\400 KV TTR_12.12.11\400 KV DOUBLE TENSION FOR ACSR MOOSE CON.



APPROVED
 With Correction
 Sr. General Manager
 OPTCL, Bhubaneswar

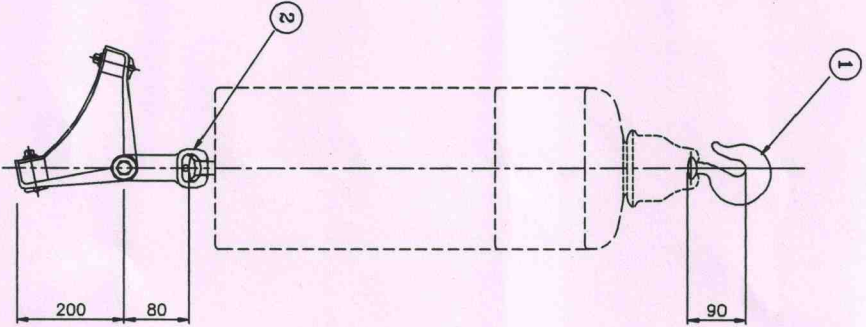


RECOMMENDED
JAINCO

APPROVED
With Correctional

CHECKED

Manager (Electrical)
O/o. SGM (TP & Con.)
OPTCL, Bhubaneswar



General Manager (Electrical)
O/o. SGM (TP & Con.)
OPTCL, Bhubaneswar

Sr. General Manager
Transmission Project & Construction
OPTCL, Bhubaneswar

No.	DESCRIPTION	STRING QTY PER	MATERIAL	UTS (KN)
1.	BALL HOOK	1	FORGED STEEL	120
2.	SOCKET EYE	1	FORGED STEEL	120
3.	SUSPENSION CLAMP ASSEMBLY	1	ALU ALLOY & STEEL	120

I	Hardware tolerance on length - ±2%
H	General Tolerance ±3%
G	All Dimensions are in mm.
F	Size of Ball & Socket 16mm,B to IS:2486
E	Stainless Steel R-clip shall be provided with socket
D	All ferrous parts shall be hot dip galvanised as per IS:2633
C	Fittings shall conform to IS:2486
B	Breaking Strength of Hardware 90 KN.
A	Breaking Strength of clamp 70 KN.

CUSTOMER:- ORISSA POWER TRANSMISSION CORPORATION LTD
ORDER NO:- SR. GM-CPC-TENDER-PKG616-04-GOPINATHPUR & KALUNGA-3/2010-7012
PROJECT NAME:- 132/33KV SUBSTATION, TRANSMISSION LINE & ASSOCIATED SYSTEMS AT KALUNGA
CONTRACTOR:- JV OF STERLING AND WILSON LTD WITH POWERCON PROJECTS & ASSOCIATES LTD.

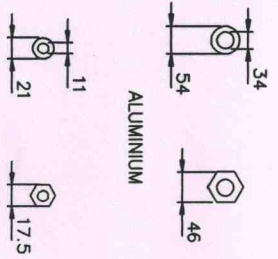
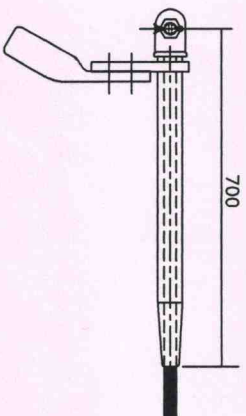
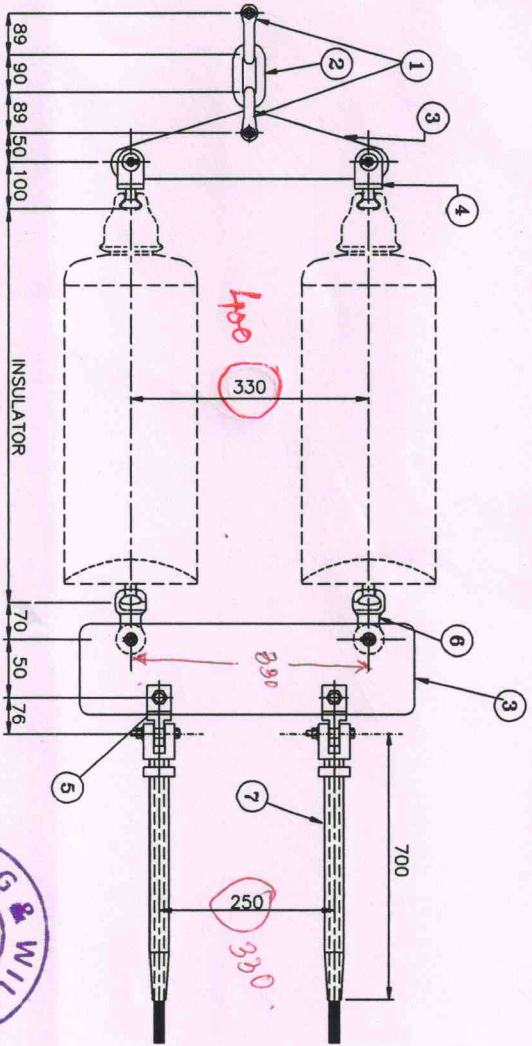
SINGLE SSUSPENSION STRING FOR ACSR MOOSE	DRAWN :-	CHECKED :-	APPROVED :-
	G.D.Z.	N.B.M.	A.S.
DRG NO :- JTL/SSM/0011	DATE:-05.01.12	REV:-00	SCALE:-NTS
FILE DEST : E:\AUTOCAD DRG\GOLAM_25.06.10\400 KV TTR_05.01.12\400 KV DOUBLE TENSION FOR ACSR MOOSE CON.			

JAINCO TRANSMISSION LTD.
70, DIAMOND HARBOUR ROAD,
KOLKATA - 700 023
INDIA



APPROVED
JAINCO With Corrections

Sr. General Manager
Transmission Project & Construction
OPTCL, Bhubaneswar



AFTER COMP. BEFORE COMP.

CHECKED

Manager (Electrical)
O/o, SGM (TP & Con.)
OPTCL, Bhubaneswar

RECOMMENDED

H	General Tolerances	IS: 2875
G	All dimensions are in mm	
F	Size of Ball & Socket	20mm. to IS: 2486
E	Stainless Steel R-clip shall be provided	Competent Manager (Electrical)
D	All ferrous parts shall be hot dip galvanized	as per IS: 2833 TP & Con.
C	Fittings shall conform to IS: 2486	OPTCL, Bhubaneswar
B	Breaking Strength of Hardware	120 KN

CUSTOMER:- ORISSA POWER TRANSMISSION CORPORATION LTD

ORDER NO:- SR. GM-CPC-TENDER-PK/G816-04-GOPINATHPUR & KALUNGA-3/2010-7012

PROJECT NAME:- 132/33KV SUBSTATION, TRANSMISSION LINE & ASSOCIATED SYSTEMS AT KALUNGA

CONTRACTOR:- JV OF STERLING AND WILSON LTD WITH POWERCON PROJECTS & ASSOCIATES LTD.

**DOUBLE TENSION
HARDWARE FOR ACSR
MOOSE CONDUCTOR**

DRAWN :- CHECKED :- APPROVED :-

N.B.M. A.S.

DRG NO :- JTL/DTM/0011

DATE:-05.01.12 REV:-00 SCALE:-NTS

Sl. No.	DESCRIPTION	QTY. PER STRING	MATERIAL
11	FASTNERS	12	MILD STEEL
10	SPRING WASHER	4	SPRING STEEL ELEC. GALVANISED
9	SECURITY CLIP	2	STAINLESS STEEL
8	SPLIT PIN	8	STAINLESS STEEL
7	COMP.DEADEND CLMP	1	ALU. & STEEL
6	SOCKET CLEWS	2	FORGED STEEL
5	CLEWS EYE	1	FORGED STEEL
4	BALL CLEWS	2	FORGED STEEL
3	YOKE PLATE	2 SETS	MILD STEEL
2	CHAIN LINK	1	FORGED STEEL
1	ANCHOR SHACKLE	2	FORGED STEEL

JAINCO TRANSMISSION LTD,
70, DIAMOND HARBOUR ROAD,
KOLKATA - 700 023
INDIA

