

APPROVED

D. S. Patra
 02/11/2017
 General Manager (Elect)
 EHT (Constrn.) Circle
 OPTCL, Sambalpur

[Signature]
 Dy. Manager (Ele.)
 EHT Constrn. Circle, OPTCL
 Sambalpur

An
 17/08/17
 Deputy General Manager (Elect)
 E.H.T. (Const) Division
 OPTCL, Barpali

CLIENT: ODISHA POWER TRANSMISSION CORPORATION LIMITED.

SAMPLE DRAWING FOR
 E-TENDER NOTICE NO.
 EHT(C)/03/2017-18

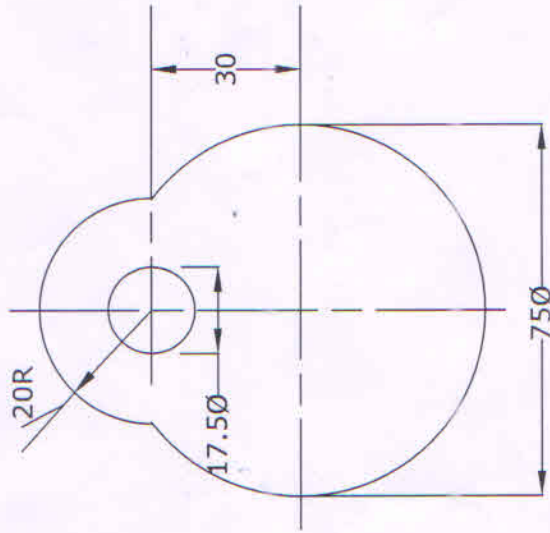
DRWN BY	SSD	TITLE	DANGER BOARD
CHKD BY			
APPD BY			
DRG NO. :- JDCIFL/OPTCL/GDB/028/2017	REV. 00	SCALE :- NTS	SHEET NO. :-

DANGER NOTICE PLATE

[Signature]
 02/11/2017
 Asst. General Manager (Elec.)
 E.H.T. (C) Sub-Division
 OPTCL, BARPALI



- NOTES :-
1. All dimensions are in mm
 2. Material M.S. 1.9 m. thick.
 3. Front side of the plate shall be vitreous enamelled. White with letters. Figures and conventional skull and bones in signal red colour.
 4. Rear side of the plate shall also be enamelled.
- s. Bolt & nuts to be galvanized.*



PHASE PLATE

17/08/17
 Asst. General Manager (Elect.)
 E.H.T. (Const) Division
 OPTCL, Barpali
 Asst. General Manager (Elect.)
 E.H.T. (Const) Division
 OPTCL, Barpali
 Asst. General Manager (Elect.)
 E.H.T. (Const) Division
 OPTCL, Barpali

NOTES :-

1. All dimensions are in mm otherwise specified.
2. One set consisting of 3 plate having red, blue and yellow colours shall be required for single circuit line
3. Two set each consisting of 3 plate having red, blue and yellow colours shall be required for double circuit line.
4. The plate shall be of minimum 3mm thick mild steel sheet. Front and back of the plate shall be enamelled. Front with colours as per Notes 1 & 2 & back enamelled black.

5. Both 4 Nuts to be galvanised

(16 gauge or more)

APPROVED

02/09/17
 General Manager (Elect)
 EHT (Constn.) Circle
 OPTCL, Sambalpur

Dy. Manager (Eie.)
 EHT Constn. Circle, OPTCL
 Sambalpur



CLIENT: ODISHA POWER TRANSMISSION CORPORATION LIMITED.

SAMPLE DRAWING FOR
 E-TENDER NOTICE No.
 EHT(C)/03/2017-18

DRWN BY	SSD	TITLE :-
CHKD BY		PHASE PLATE
APPD BY		
DRG NO. :- JDCIPL/OPTCL/GDBA030/2017	REV. 00	SCALE :- NTS
		SHEET NO. :-

NOTES :-

1. ALL DIMENSION IN MM.
2. ALL HOLES ARE 17.5MMØ FOR 16MMØ BOLTS.
3. BLANK HOLES AT GATE ARE TO BE RECEIVE BARBED WIRE.
4. STD. SPRING WASHER TO BE SUPPLIED WITH EACH BOLT AND SHALL CONFORM TO IS : 3983 (type B) & 1573 SERVICE GRADE-4.
5. ALL STEEL SHALL BE HOT DIP GALVANISED. AS PER IS : 2829.
6. ALL STEEL SHALL CONFORM TO IS : 2062 GRADE A
7. GALVANISED STEEL BARBED WIRE SHALL CONFORM TO A-1. IS : 278.
8. BOLT TO BE CONFORMING TO IS : 14394-1998 (Gr. 5)
9. BOLT / NUT TO BE HOT DIP GALVANISED. AS PER IS : 1367 (P-13) - 1983.
10. BARBED WIRE SHALL BE GIVEN CHROMATING DIP AS PER PROCEDURE LAID DOWN IN IS : 1340
11. NOMINAL LENGTH OF BARBED WIRE SHALL BE WORKED OUT AS PER FOLLOWING FORMULAE.
 $L = B + (X-3.5) \times 2 \times \tan \theta \times N$
 $B = B/B$ Width of CL for Normal Tower in Mtrs.
 $X =$ Height of Body Extn if any in Mtrs.
 $\theta =$ Lower Slope.

APPROVED

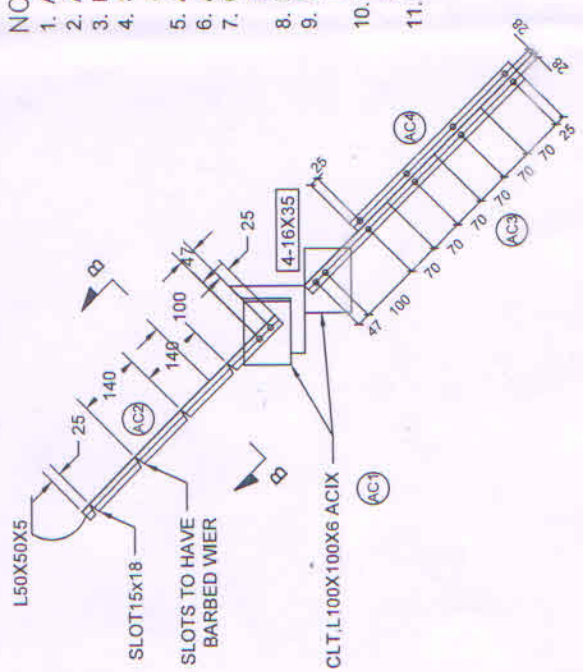
[Signature]
 General Manager (Elect)
 EHT (Constn.) Circle
 OPTCL, Sambalpur



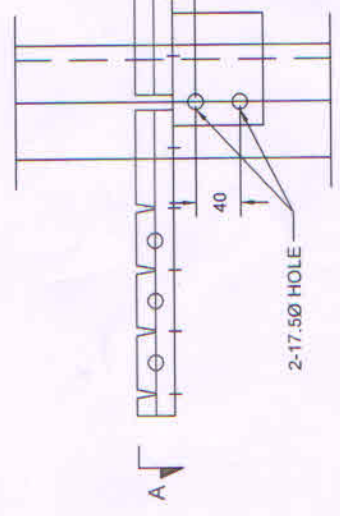
CLIENT:- ODISHA POWER TRANSMISSION CORPORATION LIMITED.

**SAMPLE DRAWING FOR
 E-TENDER NOTICE NO.
 EHT(C)/03/2017-18**

DRWN BY	SSD	TITLE :-
CHKD BY		ANTICLIMBING DEVICE
APPD BY		
DRG NO. :-	JDCIPL/OPTCU/GOB/032/2017	REV. 00
SCALE :-	NTS	SHEET NO. :-



GATE DETAILS PLAN ON A-A



VIEW ON B-B

(METHOD & WARPING BARBED WIRE)

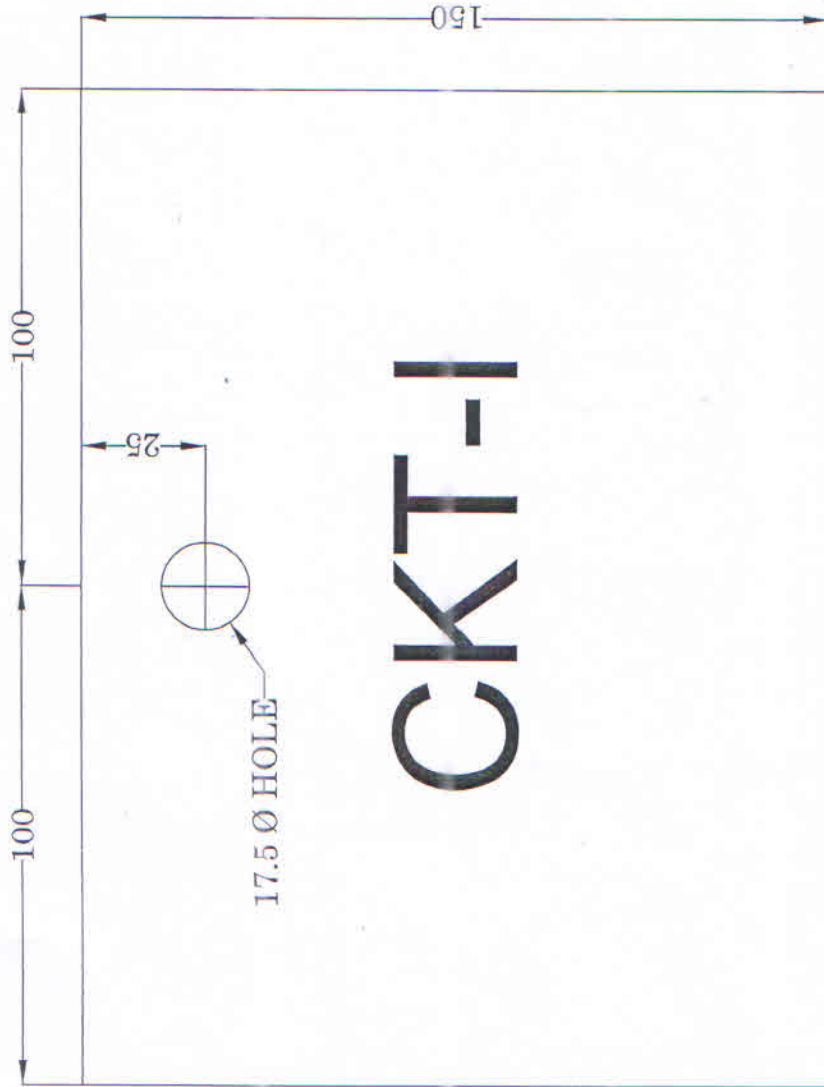
[Signature]
 Deputy General Manager (Elect.)
 E.H.T. (Const) Division
 O.P.T.C.L. Belpada

BILL OF MATERIAL

MARK NO	SECTION	LENGTH (MM)	QTY NOS
AC1/AC1X	L 100 X 100 X 6	128	4*4=8
AC2	L 50 X 50 X 6	617	4
AC3	L 50 X 50 X 6	617	1
AC4	L 50 X 50 X 6	470	1
AC5	L 50 X 50 X 6	617	3

SL.NO.	LIST OF BOLTS & NUTS / TOWER			QTY		
	SIZE					
1	STUB THICK. (mm)	7-11	12-16	17-21	22-26	8
2	LENGTH OF M18 BOLT (mm)	48	50	55	60	19
3	M-16 X 35LG	16 MM DIA 3.5 MM THK.SP. WASHER			20	

[Signature]
 Asst. General Manager (Elect.)
 E.H.T. (C) Sub-Division
 OPTCL BARPADA



NOTES :-

1. All dimensions are in mm otherwise specified.
2. Lettering should be in red enamelled on white background.
3. Rear side of the plate shall be enamelled black.
4. One set consists of 2 such plates with markings 'I' & 'II' for double circuit tower only.
5. The material of the plate shall be of mild steel having minimum thickness 1.0 mm ² *on 16 gauge or more*

APPROVED

Debat, Sambalpur

General Manager (Elect)
EHT (Constn.) Circle
OPTCL, Sambalpur

[Signature]

Dy. Manager (Ele.)
EHT Constn. Circle, OPTCL
Sambalpur

CLIENT:- ODISHA POWER TRANSMISSION CORPORATION LIMITED.

**SAMPLE DRAWING FOR
E-TENDER NOTICE No.
EHT(C)/03/2017-18**



[Signature]

[Signature]
17/05/19

Deputy General Manager (Elect.)
E.H.T. (Const.) Division
O.P.T.C.L., Bhubaneswar

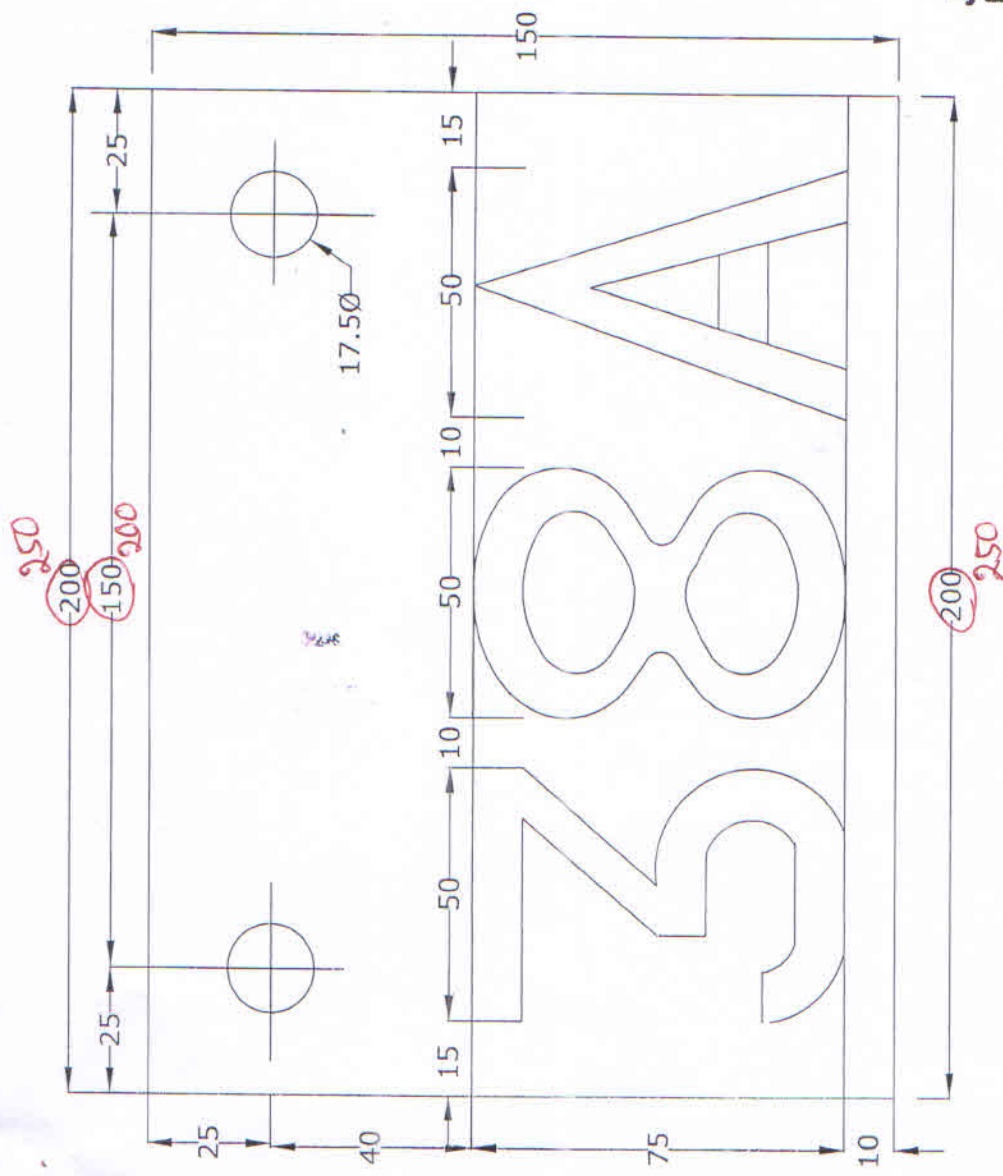
[Signature]
General Manager (Elect.)
E.H.T. Sub-Division
OPTCL, Bhubaneswar

TITLE :-

DRWN BY	SSD	
CHKD BY		
APPD BY		

DETAILS OF CIRCUIT PLATE (CIRCUIT-I)

DRG NO. :- JDCIPL/OPTCL/GDB/039/2017 REV. 00 SCALE :- 1:1 SHEET NO. :-



APPROVED

[Signature]
 General Manager (Elect)
 EHT (Constn.) Circle
 OPTCL, Sambalpur

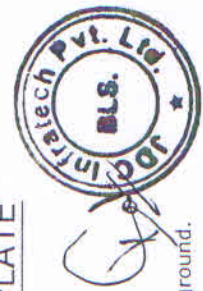
[Signature]
 Dy. Manager (Ele.)
 EHT Constr. Circle, OPTCL
 Sambalpur

[Signature] 17/05/17

[Signature]
 Junior Manager (Elect.)
 E.H.T (c), Sub-Division
 OPTCL, Barpali

[Signature]
 Deputy General Manager (Elect.)
 E.H.T. (Const) Division
 O.P.T.C.L., Balangir

NUMBER PLATE



NOTES :-

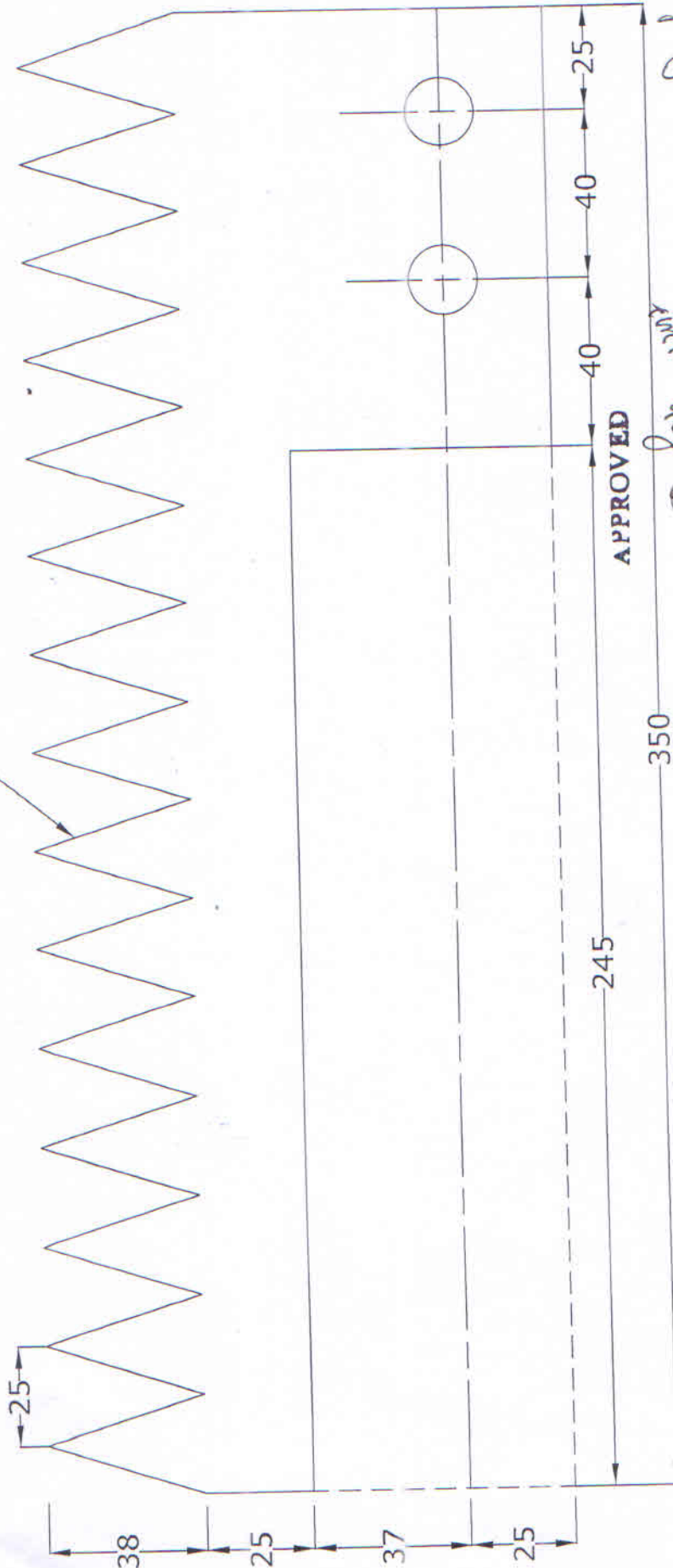
1. All dimensions are in mm otherwise specified.
2. Lettering should be in red enamelled on white background.
3. The rear side of the plate shall be enamelled black.
4. The plate shall be of minimum 0.6mm thick mild steel sheet.
5. For number plate, numbering shall be in sequence of tower numbers as per specification.
6. 'CS' represents first letter of starting and ending place of line respectively.

CLIENT: ODISHA POWER TRANSMISSION CORPORATION LIMITED.

SAMPLE DRAWING FOR
 E-TENDER NOTICE NO.
 EHT(C)/03/2017-18

DRWN BY	SSD	TITLE :-
CHKD BY		
APPD BY		NUMBER PLATE

38MM WIDE
14Nos. TEETH



APPROVED

BIRD GUARD

General Manager (Elect)
EHT (Constn.) Circle
OPTCL, Sambalpur

Dy. Manager (Ete.)
EHT Constn. Circle, OPTCL
Sambalpur

CLIENT: ODISHA POWER TRANSMISSION CORPORATION LIMITED.

SAMPLE DRAWING FOR
E-TENDER NOTICE NO.
EHT(C)/03/2017-18



Rm
17/08/17

Deputy General Manager (Elect.)
E.H.T. (Const.) Division
O.P.T.C.L. Bargarh

Junior Manager (Elect.)
E.H.T (c), Sub-Division
OPTCL, Bargarh

NOTE :-

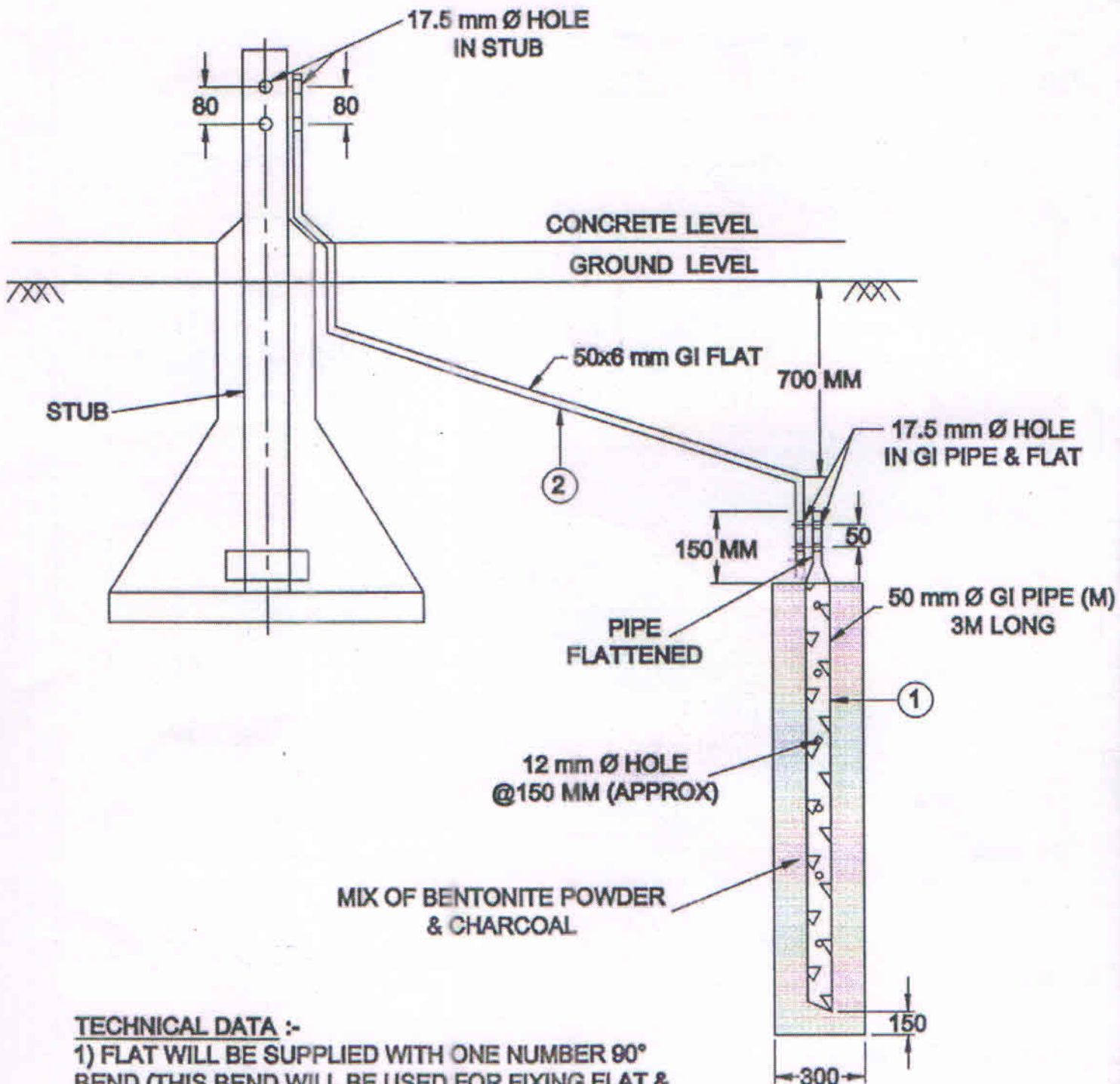
1. All dimensions are in mm otherwise specified.
2. To be galvanized after manufacturing.
3. Weight per piece = 0.690 kg.
4. Quantity = 6 nos.

TITLE :-

DETAILS OF BIRD GUARD

DRWN BY	SSD
CHKD BY	
APPD BY	

DRG NO. :- JDCIPL/OPTCL/GDB/031/2017 REV. 00 SCALE :- 1:1 SHEET NO. :-



TECHNICAL DATA :-

- 1) FLAT WILL BE SUPPLIED WITH ONE NUMBER 90° BEND (THIS BEND WILL BE USED FOR FIXING FLAT & Ø50NB PIPE) OTHER BENDS WILL BE DONE AT SITE
- 2) ALL DIMENSIONS ARE IN MM

- 3) Earthing pipe shall be fabricated out of 50 mm NB heavy duty G.I. pipe conforming to IS: 1239 (part-1)
- 4) G.I. Flat will conform to IS: 2062 GR 'A'.
- 5) All Nuts bolts and washers shall be Electro galvanised.

JAINCO

SL NO.	DESCRIPTION	QTY. PER SET	MATERIAL
1	Ø50mm GI PIPE	1 NOS	MILD STEEL HDG
2	50x6x3000 mm LONG FLAT	1 NOS	MILD STEEL HDG

List of Nut bolts / tower				Qty
Sr No	Size			
1	Stub Thickness (mm)	7-11	12-16	2
	M16 mm bolt & Nut	40 mm long	45 mm long	
2	M16 x 40 mm Bolt & Nut			2
3	Spring Washer 3.5 mm thick x 16mm			4

APPROVED

Delewarend
Asst. Manager (Elect.)
LHT Constr. Circle
OPTCL, Sambalpur

Rajan
Sr. General Manager, Elect.
E.H.T. Construction Circle
O.P.T.C.L., Sambalpur

Manish



CONTRACTOR: M/s BAJAJ ELECTRICALS LIMITED			
SAMPLE DRAWING FOR E-TENDER NOTICE NO. EHT(C)/03/2017-18		PROJECT AND	
		2015-17-076(2)&	
CONTRACT NO : 4071(2) dtd 01.06.2015		GEN. TOLERANCE :- 2.0 MM OR 1%, WHICH EVER IS GREATER	
JAINCO TRANSMISSION LTD. 70, DIAMOND HARBOUR ROAD, KOLKATA - 700 023 INDIA	PIPE TYPE EARTHING FOR 132 KV TL DRG. NO. JTL-PE-RE16A	DRAWN :-	CHECKED :-
		G.D.Z.	P.GHOSH
		DATE :- 09.09.15	REV :- 01
		SCALE :- N.T.S.	
FILE DESK :- E:\AUTOCAD DREGS\AM_25.05.10\BAJAJ ELECTRICAL_09.09.15\J.L. PIPE (Ø50 mm) 3.0M LONG)			